

SURVEYS 2018

Each year St Stephen's School conducts research across its school community in order to gather data about the needs, attitudes and perceptions of its parents, students and staff members.

PARENTS

OVERALL

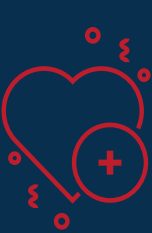


95% believe St Stephen's School is a welcoming place

88% feel the School's core values are known and enacted

91% find that the School provides sufficient and appropriate opportunities to demonstrate care and service for others as per the School's core values

agree the School teaches students to be responsible with technology **87%**



86% of parents believe teachers treat students fairly

88% agree that parental involvement in a child's education is encouraged and supported at St Stephen's School

More than Three-quarters **77%** agree student behaviour is well managed

The School received 423 individual responses. Parents that completed the survey represent all School campuses.

STUDENTS

OVERALL



Almost **90%** of students feel safe at St Stephen's School

More than **3 in 4** students are happy, have friends and feel positive about the future

Almost **80%** of students feel they can talk to staff

80% agree the School reaches out to the community to enhance the learning opportunities for students

More than **3 in 4** students are satisfied with the overall standard of education provided by St Stephens' School



Three-quarters of students believe the School responds appropriately to concerns

80%

agree the school teaches students to be responsible with technology



This survey was completed by 360 students from all of the School's campuses.

STAFF

OVERALL



Over **95%** of staff indicate that St Stephen's School expects students to do their best

3 in 4 staff members find the School responds appropriately to concerns of the responding group

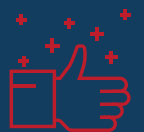
100% of staff believe teachers motivate students to learn



97% report feeling that St Stephen's School is a welcoming place



95% of teachers believe they provide students with useful feedback on their work



95% of staff are satisfied with the overall standard of education provided

98% believe teachers treat students fairly

96 staff members from all campuses responded to this survey.



DUNCRAIG (PK-12) | CARRAMAR (PK-12)

