



Upright Builders, Homesite 19 - 5,083 SF
6516 Reserve Pine Drive • Cary, NC 27519

Montvale Sales Office open daily

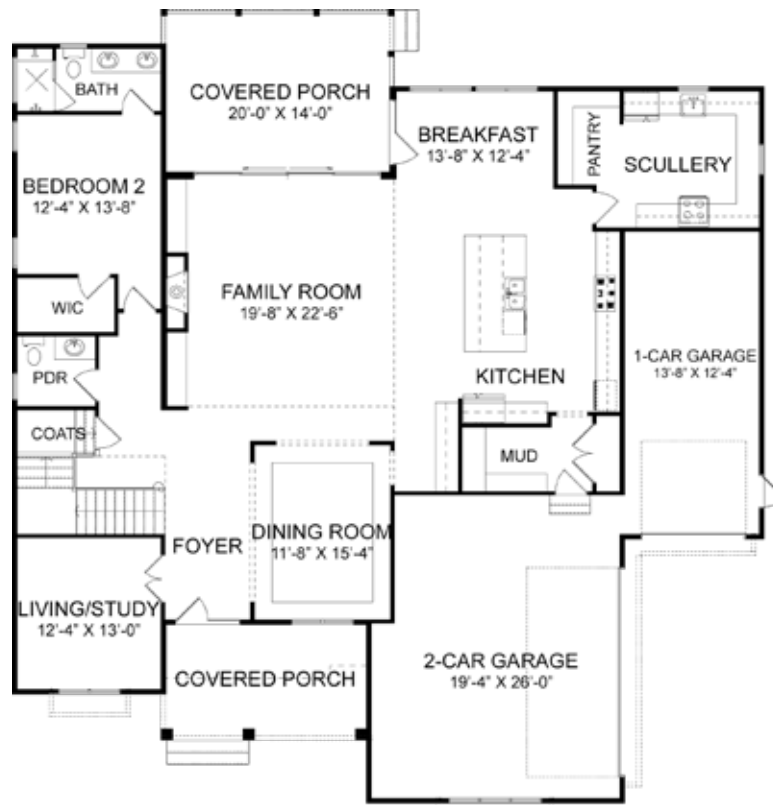
919-650-6414 • 1072 Montvale Ridge Drive in Cary, NC 27519 • MontvaleCary.com

Floorplans and renderings are artist representations and subject to change without prior notice. Dimensions are approximate. Plans are copyrighted and duplication is prohibited. Sales by Coldwell Banker Howard Perry and Walston New Homes & Land.

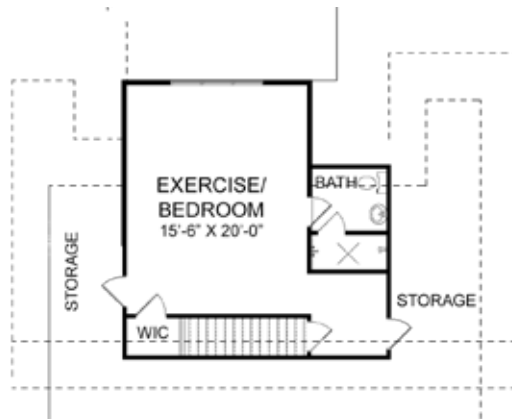


MONTVALE

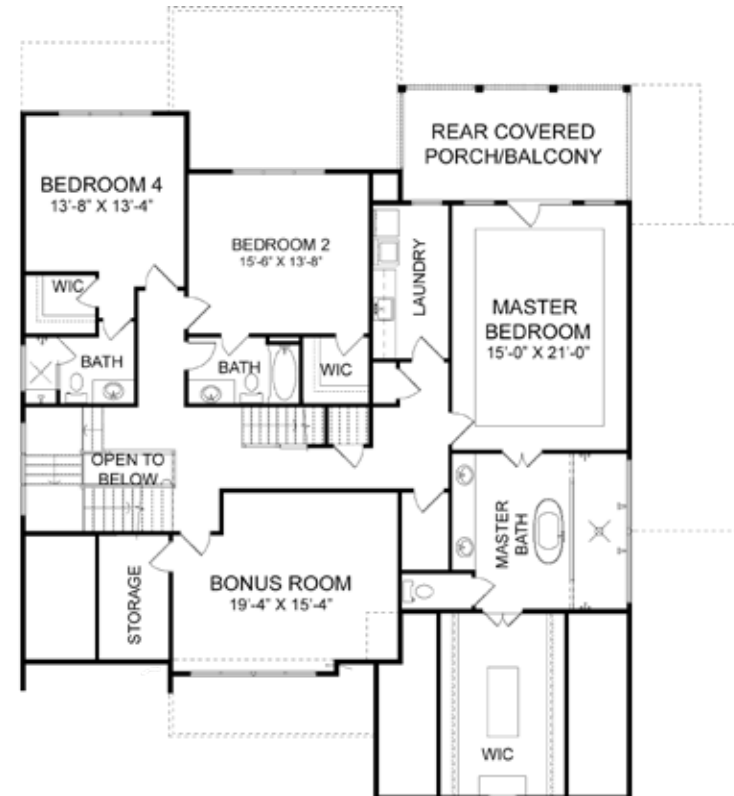
AT COPPERLEAF



FIRST FLOOR



THIRD FLOOR



SECOND FLOOR

Upright Builders
 Homesite 19 - 5,083 SF
 6516 Reserve Pine Drive • Cary, NC 27519