

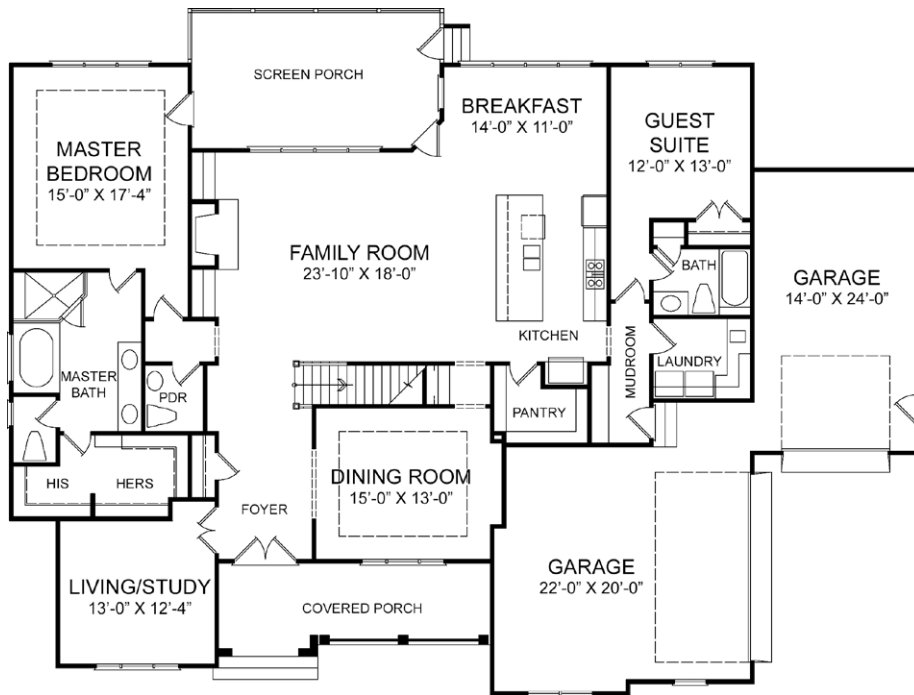


Poythress Homes, Homesite 103 - 3,672 SF
1713 Montvale Grant Way • Cary, NC 27519

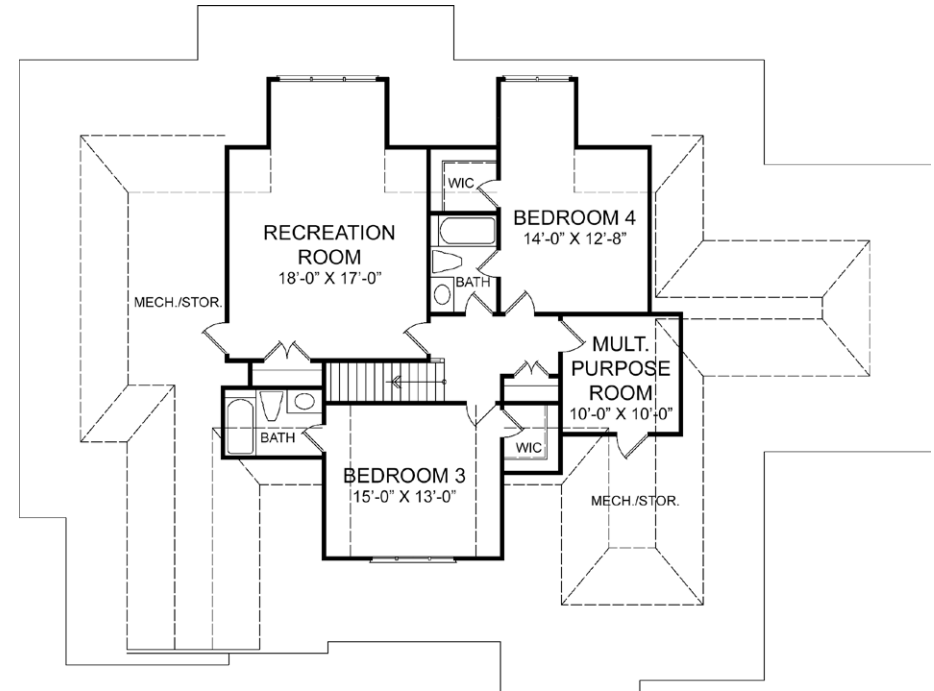
Montvale Sales Office open daily

919-650-6414 • 1072 Montvale Ridge Drive in Cary, NC 27519 • MontvaleCary.com

*Floorplans and renderings are artist representations and subject to change without prior notice. Dimensions are approximate.
Plans are copyrighted and duplication is prohibited. Sales by Coldwell Banker Howard Perry and Walston Builder Services.*



FIRST FLOOR
2,460 SF



SECOND FLOOR
1,212 SF

Poythress Homes
Homesite 103 - 3,672 SF
1713 Montvale Grant Way • Cary, NC 27519