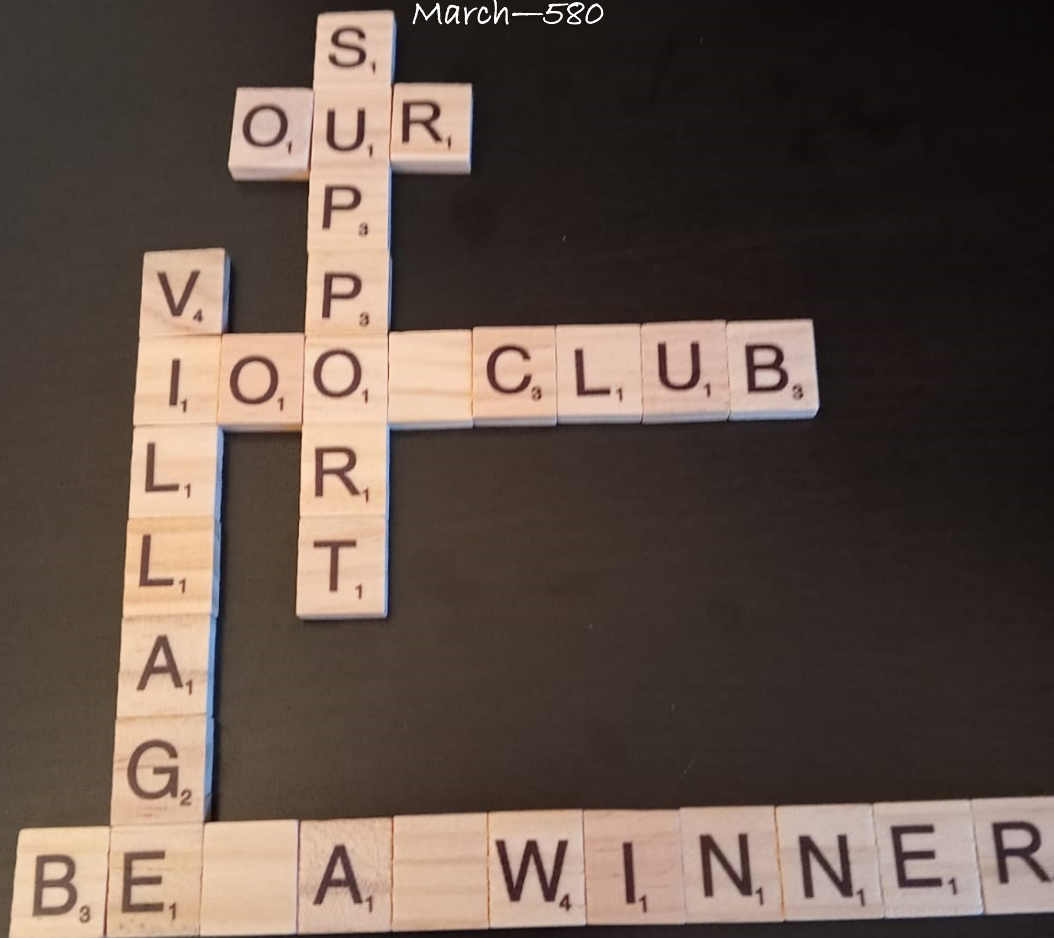


the **DYDDI** digest

March—580



**Didmarton's local magazine incorporating  
Leighterton, Boxwell and Sopworth**



## Rubbish Dates

All Bins: 14th & 28th March

Food Waste: 7th & 21st March

Download Dates

[www.didmartonvillagehall.co.uk/#Dyddi](http://www.didmartonvillagehall.co.uk/#Dyddi)

## Diary Dates

- 1st St David's Day
- 2nd Beaufort Races
- 4th British Pie Week
- 8th Rural Cinema
- 14th Pi Day (see Feb!)
- 15th Red Nose Day
- 17th St.Patrick's Day
- 20th Spring Equinox
- 31st Easter Sunday
- 31st Clocks go Forward



## Local Places to Stay

Didmarton - Self-contained 1 bedroom annex with parking for one car. Contact Emma 07702 693100 (Photos <https://abnb.me/ZmWzKKHPiBb> please call to book).

Didmarton - The Kings Arms, 01454 238245 <https://butcombe.com/the-kings-arms-gloucestershire/>

**To include your property email details to - [editor@dyddi.co.uk](mailto:editor@dyddi.co.uk)  
A small contribution for inclusion is appreciated.**

## TELEPHONE NUMBERS

Phoenix, Tetbury Surgery – 01666 502303

Police – to report incidents – 101

Tolsey Surgery, Sherston – 01666 840270

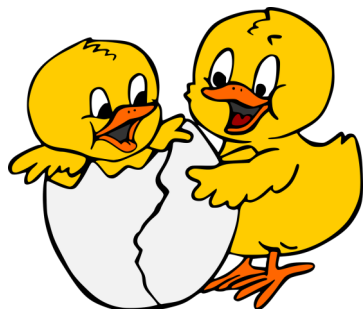
Tetbury Hospital – 01666 502336

Oldbury Garage – 01454 537016

Dyddi Editor – 07833 433337 /  
editor@dyddi.co.uk

Parish Council, John Hammond – 01454 238373

VILLAGE HALL BOOKINGS – didhallbookings@gmail.com



## BABYSITTING CONTACTS

Elizabeth Darbyshire – 07702 693100

Henry Yandell - 07719 304445

Francesca Goodwill - 07483 839082/07972783679

Esmé Kay 07850 247096

## BRAIN TEASERS!

Throughout this edition you will find brainteasers (all to be on one page next month) Five Categories and Twenty Questions: For each you are given the initial letters and the number of letters in each word.

Example:

### SEASIDE TOWNS

W S M 6 5 4

Answer: Weston Super Mare

Answers next time ...

Compiled by David Michel

## HOLDING BACK THE YEARS

My one year anniversary of 'Doing the Dyddi', time really just fly. Thank you for everyone who responded to last months pleas. We have a bumper edition this month including

**100 Club, A New Year p5**

**Cotswold District Council Update p8**

**Speedwatch Results p12**

**D-Day 80 Year Anniversary Celebrations to come p13**

**As'Twas (looking into the archives) p21**

We also have Brainteasers, kindly compiled by David Michel. 20 questions across 5 categories. For each you are given the initial letters and the number of letters in each word.

Example: **SEASIDE TOWNS** W S M 6 5 4 Answer: Weston Super Mare

They are more difficult than you think, no cheating please. They are scattered throughout this edition but will have a dedicated page going forward.

**All contributions should be sent before the 15th of each month—anyone can offer a contribution, go on, express your inner writer even more on online:-**

**[www.didmartonvillagehall.co.uk/#Dyddi](http://www.didmartonvillagehall.co.uk/#Dyddi)**

*Roxanne Fox-Roberts / [editor@dyddi.co.uk](mailto:editor@dyddi.co.uk)*

**A warm welcome to Didmarton to the Davison family at Elmleaze, Tom, India, Arthur, Jack and Evie. We hope you will enjoy many happy years in the village.**

### BRAINTEASER 1—Ancient Ways

1. F W 5 3

2. G N R 5 5 4

3. R 8

4. E S 6 6

5. B H R 9 5 4

## DIDMARTON 100 CLUB

Our 100 Club year ends on 30th April and we are beginning to organise the collection for 2024/2025.

A big thank you to all of you who are already members and we hope that we can count on your support in the coming year. We also look forward to welcoming new members and would like to thank you in advance for supporting our village through this fund-raising effort.

### What is the 100 Club?

The Club was established over 30 years ago to raise funds for the village, whilst giving you the chance of winning a monthly prize. The money raised from subscriptions is split between providing prize money and giving a very substantial donation to the DVHCC to use for any projects that they see fit for the benefit of our community.

Over the last year we collected £1,740 with about half being given back in prize money and the Didmarton Village Hall & Community Committee (DVHCC) benefitting by the same amount.

### How much does it cost?

The cost is £12 (i.e. £1 per month or 25p a week) per person per year and this is collected annually. The cost of the subscription has remained the same for 30 years and must be one of the few things not to have seen a price increase in all this time. We also accept pets into the club. At present we have 9 dogs, 1 budgie and 1 cat as members with several of these winning this year. All pets welcome of course and what a wonderful way to include them in village life. Membership is per person and not just household. Also, there is no restriction on the number of entries you can make.

### What can I win?

A draw is held every month and we try to do this at a village event if possible.

At present we have 4 prizes each month of £20, £15, £10 and £10 with a special Christmas draw of up to 10 prizes which in 2023 amounted to £200. Prize money is reviewed every year and depends on how much money we raise so the more people that join the more prize money is available to be won.

**PLEASE HELP US TO MAKE THIS OUR BEST YEAR EVER** you could be one of our lucky winners!



The February draw took place at the Film Night held on February 9th in the Village Hall. The winners were:-

<b>1st Prize</b> £20	Janet Bowers-Broadbent	<b>2nd Prize</b> £15	Josh & Becky Batterham
<b>3rd Prize</b> £10	Val Marriott	<b>4th Prize</b> £10	Celia Bedford
<b>Sue and Sue</b>			

## **Didmarton 100 Club**

### **HOW DO I PAY MY SUBSCRIPTION?**

#### **IMPORTANT INFORMATION.**

We are looking to collect your subscription for 2024/25 during the coming weeks.

This remains at £12 and can be paid in 3 different ways.

#### **Bank Transfer**

**To help with the efficiency of the collection, we are asking that as many of you as possible pay by Bank Transfer.** If you used this method last year, our bank details remain the same.

**Lloyds Account Name: Didmarton 100 Club**

**Sort code: 30-91-99    Account number: 77225368**

and do please include your name and address as the reference.

#### **Cash or Cheque**

Please complete the form on the next page and return your subscription, as either cash or cheque (payable to Didmarton 100 Club), in an envelope to your NEAREST COLLECTOR.

Our Collectors are:-

Amanda Hathaway, Windways, The Street

Susie Jones, Old Manor Farmhouse, The Street

Jackie Crewe, 16 St. Arild's Road

Janet Bowers Broadbent, 35 The Street

Sue Cook, 54 The Street

Sue Hammond, 6 Bertha's Field

**To ensure that you are included in the May 2024 draw it would be helpful if payment could be made by March 30th.**

If you are unable to pay by any of the above methods, please do not worry as our collectors will be out and about during April knocking on doors to personally collect your money either as cash or a cheque.

We hope that those of you who are new to the village will consider joining the Club. If you would like more information, please contact Sue Cook on 238222 or Sue Hammond on 238373.

Thank you everyone in anticipation of your much needed support.

## SUPPORT THE DIDMARTON 100 CLUB

2024/25 Membership Renewal

(for payment by Cash or Cheque)

If you would like to join or renew Membership at £12 per individual, please cut out the completed form and return it, together with your payment in an envelope to your nearest collector.

Thank you for your continued support.

-----

I/We would like to join/renew membership of Didmarton 100 Club and enclose cash/cheque (made payable to Didmarton 100 Club), being the subscription for 2024/25.

Name(s) \_\_\_\_\_

Address \_\_\_\_\_

\_\_\_\_\_

For help/queries please contact

Sue Cook 238222 or Sue Hammond 238373

**CDC:** We reviewed the administration's budget proposals at Overview and Scrutiny (O&S), and it was refreshing to note that the spending was realistic, although reserves are forecast to further reduce in the coming 1-3 years. There was good news from the government that an additional £118k will be received by CDC, but it is still difficult to budget properly without a multi-year settlement.

Elsewhere at O&S and full council, the updated Local Plan was reviewed – this is now available for public consultation via the CDC portal. We also reviewed the Corporate Plan, which is effectively the manifesto and priorities for the administration.

The **Public Conveniences Review Group's** recommendations were largely accepted by the Cabinet, but any changes to entry fees will be delayed until more data is available from the newly installed card readers at some sites. There will be a tendering process for the ongoing cleaning and maintenance contract, and a budget for initial refurbishments will be allocated later in the year. Where sites have been identified to be closed, consultation will take place with Town councils, and any contractual considerations will be followed up by officers.

**Visit to Javelin Park Incinerator** – Following my visit to the recycling plant last year I was invited by Avening WI to join them on a visit to the Javelin Park Incinerator near Gloucester. The household residual waste, that is waste left over after kerbside recycling, is managed by a Spanish company called Urbaser on behalf of Gloucestershire County Council. The 'Energy from Waste Facility', significantly reduces the county's dependence on landfill, whilst recovering value from waste in the form of electricity, recyclable metals, and aggregates. The site has a long history, being a key facility for the development of the Javelin jet aircraft during the second world war, and this is reflected throughout the plant. If you have noticed an unusually straight section of the M5 going south from junction 12, this is actually built over the original runway! The building is a bit 'Marmite' with many people hating it, but it was designed to minimise the visual impact in such a prominent position – you can be your own judge. Inside, it is a cathedral of steel, with waste delivered into a giant concrete hopper at one end. The mostly automated process (there are only around 40 workers) consumes up to 190,000 tons of rubbish per year which would otherwise have gone to landfill. A grab, like a giant version of the one to win a teddy at fairgrounds, feeds the two furnace conveyor belts. The fire heats water (later super-heated) into steam which drives a massive turbine, producing enough surplus energy to power 25,000 homes. The facility manages the gaseous products of combustion through a sophisticated cleansing and filtration system to ensure that flue gas emissions are well within regulatory limits – the only visible evidence (depending on the weather) is a small plume of warm gas rising from the chimney. From this process, there are two solid waste products: Incinerator Bottom Ash (IBA), which is processed to recover metals that have passed through the system and is then graded for recycling, and lime-based residues from the flue gas treatment system, which are taken off site for treatment and disposal.

*Continued over>*



**Visit to Zero Avia** – Here is another high-tech firm on our doorstep based at Cotswold Airport. It is a world leader in developing aeroplanes powered by Hydrogen – not burned in the engine, but powering electric fuel cells. The 200+ employees at ZeroAvia have developed high performance, high efficiency systems from scratch in pursuit of zero-emission flight. The technology has already been proven, with their Dornier 228 aircraft making history last year with a milestone first flight. The next challenge is a test flight from Kemble to an airport in Hampshire, on their mission to get CAA certification by the close of this year, and to power zero-emission commercial aircraft by 2025.

**Roads** – After travelling elsewhere in the country, it is obvious when you are back in Gloucestershire – exit any junction from any motorway in the county and you are immediately bouncing along pothole riven roads. Following my petition to our two local MPs, they have both written to the Transport Minister to ask for a review of the Highways Act 1980, which gives councils a ‘get out of jail’ card to refuse claims for damaged wheels if they meet certain criteria – mainly an annual inspection of the road. They have also written to the Chief Executive at GCC to ask what they are doing about the state of our roads. Meanwhile, I am about to start legal proceedings against GCC in support of my own claim.



Javelin Park Incinerator



Zero Avia test aircraft

### **Councillor Tony Slater**

Cotswold District Council, Representing Grumbolds Ash with Avening.

email: [Tony.slater@cotswold.gov.uk](mailto:Tony.slater@cotswold.gov.uk) Tel: 07793669930

### **BRAINTEASER 2—First Aid**

- |                |            |
|----------------|------------|
| 1. P 7         | 2. D L 4 4 |
| 3. N A T 6 3 6 | 4. N F 4 4 |

## Other updates and information for Parish Councils:

### HOW TO REPORT POTHOLE

I recommend using this link, especially if you have a smartphone and can take a photograph of the pothole and identify the exact position. It is more efficient than emailing the council as officers get a daily schedule of these alerts.

Gloucestershire County Council, report a pothole:

<https://www.gloucestershire.gov.uk/highways/roads/your-highways-report-it/>

### FIX MY STREET

Report, view, or discuss local problems like graffiti, fly tipping, broken paving slabs, or street lighting. This reports back to the appropriate Council: [LINK](#)

### CHANGES TO THE PLANNING PROTOCOL SCHEME OF DELEGATION and THE PLANNING REVIEW PANEL

On 24 January, the Full Council voted to approve an update to the Scheme of Delegation following recommendations by the PAS (Planning Advisory Service). The most significant item is the 28-day call-in deadline from the date of validation. This means that District and Parish Councillors need to identify concerns very early on in the application stage, without the benefit of a case officer's report. Currently members call in applications towards the end of the process. Going forward, if an application is of concern, District Councillors will need to liaise with Planning Officers and Parish Councillors with some urgency. Pro-forma will be created which will also give the member the ability to make a conditional request for scrutiny at the Planning Committee.

At present the Planning Review Panel is held monthly, which can result in delays for some applications. It is proposed to amend this to a bi-weekly meeting which would mean that no application waits longer than 14 days from the point of call in.

### FIBRE OPTIC TELEGRAPH POLES

You may have received correspondence from David Dunbar of Willersey Parish Council. I thought I would clarify the policy for you:

Schedule 2 Part 16 of the Town and Country Planning (General Permitted Development) (England) Order 2015 sets out the permitted development rights relating to telecommunications apparatus. The following is relevant to fixed line broadband:

A.2 (5) The conditions set out in paragraph A.3 (prior approval) do not apply in relation to Class A development on any article 2(3) land which consists of the construction, installation, alteration or replacement of a telegraph pole, cabinet, or line, in connection with the provision of fixed-line broadband. Telecommunication operators do not therefore typically need planning permission nor prior approval for telegraph poles/cabinets or lines required in connection with the provision of fixed-line broadband, even in AONBs or conservation areas.

Notwithstanding the above, the operator also has a duty to accord with the following legislation:

The Electronic Communications Code (Conditions and Restrictions) Regulations 2003

Regulations 4 and 5 state:

4.—(1) A code operator shall install all lines underground unless—

(a) the line is flown from a pole in an area where service lines are already flown from poles;

(b) the line is—

(i) affixed to and lying on the exterior surface of a building or other permanent structure and is either used as a service line or terminates at a service line distribution point;

(ii) a service line flown from the eaves of one building or other permanent structure to those of another where the distance between them is less than 8 metres; or

(iii) a feeder cable connecting equipment for the provision of services by wireless telegraphy; and is neither affixed to a building shown as grade 1 or category A in the statutory list of buildings nor located in a conservation area;

(c) the line is attached to or supported by poles or pylons which are used in connection with the transport of electricity at a nominal voltage of at least 6000 volts;

(d) the line is installed for the purpose of providing a temporary electronic communications network under regulation 15; or

(e) it is not in all the circumstances reasonably practicable to do so.

5.—(1) A code operator must give one calendar month's notice, in writing, to the planning authority for the area in question where—

(a) he has not previously installed electronic communications apparatus in the area and is intending to install electronic communications apparatus, other than lines, in that area; or

(b) he intends to install a cabinet, box, pillar, pedestal, or similar apparatus for the installation of which he is not required to obtain planning permission under the Town and Country Planning Act 1990(1).

(2) The notice to be given under paragraph (1) must state the code operator's intention to install electronic communications apparatus and must describe that apparatus and identify the location where it is proposed to install it.

(3) Where a code operator has given notice under paragraph (1), the planning authority may, within one calendar month of the receipt of that notice, give the code operator written notice of conditions with which the planning authority wishes him to comply in respect of the installation of the apparatus, but he is not obliged to comply with those conditions to the extent that they are unreasonable in all the circumstances. Regulation 4 is a legal requirement for the operator. I am not sure what action this Council could take if the operator doesn't follow the requirements. We could end up with a situation where there is a breach of the 2003 regulations but no breach of planning because the 2015 GPDO advises that neither planning permission nor prior approval is required.

With regard to Regulation 5, the wording refers to 'cabinet, box, pillar, pedestal or similar apparatus'. It does not appear to refer to a pole, unless this is considered to constitute 'similar apparatus'. Whilst the LPA can potentially request a condition, my informal view is that it would need to reasonably relate to what is being proposed eg requesting a cabinet to be painted a certain colour, rather than requiring the operator to undertake a different form of development such as placing an overhead line underground. Moreover, the operator is not obliged to comply with the conditions if they are considered unreasonable.

### BRAINTEASER 3 —Traditions of Theatre

1. PAJ 534

2. P 9

3. CDA 834

4. TSP 384

5. CAT 637

## SPEED WATCH REPORT

Our last speed watch sessions were held between Monday 22nd January and Friday 26th January 2024.

We managed to hold 8 sessions out of the planned 9, which is a very good result for this winter month.



As you can see from the table, with the exception of Thursday morning and both Friday sessions, the numbers recorded are quite low. To put this in context, when we first started speed watch we would regularly record between 19 vehicles and 30 vehicles so we are clearly having a positive effect on speeding traffic through the village.

However it is very disappointing to see that even when we record low numbers there were still 6 vehicles recorded as doing 40mph or above, with the highest being an unbelievable 54!

Date & Time	Positive ID's	Highest Speed
Monday 22 January am	2	54
22 January pm	3	41
Tuesday 23 January am	4	40
Wednesday 24 January am	2	36
Thursday 25 January am	9	45
25 January pm	2	38
Friday 26 January am	7	44
26 January pm	12	46
Total	43	

**Sue Hammond and the Team of Speed watch Volunteers**

D-DAY  
JUNE 6<sup>th</sup> 1944  
**80<sup>th</sup> ANNIVERSARY**  
**THURSDAY JUNE 6<sup>TH</sup> 2024**

In 2024 the UK will commemorate the 80th anniversary of the Normandy Landings on 6 June 1944 with a series of major commemorations and events across the UK and in France.

The Normandy landings, known as D-Day, saw the Allied Forces mount a large-scale invasion of Nazi-occupied France that ultimately tipped the course of the Second World War in favour of the Allies.

It was the LARGEST NAVAL, AIR AND LAND OPERATION IN HISTORY with over 4,000 ships, landing craft and gliders setting down about 156,000 troops and paratroopers on five Normandy beaches in an action that would bring about the liberation of north-west Europe from Nazi occupation. The troops were American, British and Canadian amongst many other nationalities and their bravery was costly – more than 4000 men and women died on the first day with over 70,000 others in the following days as they secured the beachhead and surrounding countryside of Normandy.

Go to <https://www.history.com/news/d-day-normandy-wwii-facts> for a detailed account of the events of that day.

**DIDMARTON VILLAGE WILL BE AMONG HUNDREDS OF VILLAGES  
COMMEMORATING THE SACRIFICE MADE BY THOSE INVOLVED ON  
THAT MOMENTOUS DAY.**

The DVHCC with the backing of the Parish Council are to hold a 'party atmosphere' evening at the village hall and playing fields on the actual 80<sup>th</sup> anniversary day – a Thursday.

There will be games for the young at heart, beverages and best of all - Fish 'n [Chips](#)

BUT MOST IMPORTANTLY ..... THERE WILL BE A BONFIRE BEACON - to be lit at 21.30. This will coincide with all the other villages around the country and abroad.

All this will be in line with advice and direction from 5 main charities organising the event and you can download the guide by going to <https://www.d-day80beacons.co.uk>

The charities are: The Royal Naval Association, ABF The Soldiers Charity, RAF Benevolent Fund, The Merchant Navy Association & The Normandy Memorial Trust.

SAVE THE DATE AND LOOK OUT FOR FURTHER INFORMATION IN THE DYDDI NEXT MONTH.



# Beaufort Races & Country Fair

at Didmarton, GL9 1EA

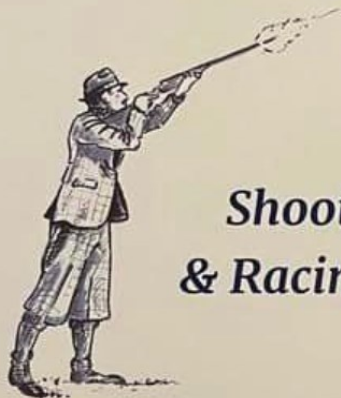
Saturday 2nd March • Gates open at 10am

Early Bird Tickets £15 • On the gate £20 • Under 16's Free

## Horse & Pony Racing



## Shooting Simulator & Racing Car Simulator



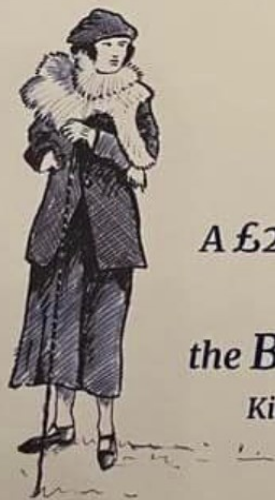
## Fun Dog Show



A £200 Wadswick Clothing voucher will be  
presented to

**the Best Dressed Lady On The Day!**

Kindly sponsored by Wadswick Country Clothing



Rodeo Sheep • Total Wipeout & Lots more •  
Numerous Trade Stands • Refreshments and Bar

**A super family day out**



SHERSTON DOGGY  
DAYCARE

# FUN DOG SHOW at

## BEAUFORT RACES, Saturday 2nd March 2024



SHERSTON BOARDING  
KENNELS



The Warren Events will be onsite  
all day offering a range of  
refreshments.

**CLASSES:** Commencing at 11:30am sharp

**11:30 Best Young Handler**

**11:50 Top Terrier - All Terriers Welcome**

**12:10 Dog the Duchess of Beaufort would most like to take home**

(Kindly judged by Her Grace, The Duchess of Beaufort.)

**12:30 Best Lurcher, Greyhound, Whippet - All long dogs welcome**

**12:50 Best Working/Gundog**

**13:10 Loveliest Labrador/Retriever**

**13:30 The Waggliest tail**

**14:00 Super Sausage - The best Dachshund**

Entries can be made on the day  
(cash only, cash point is available  
on site) from 10:45am.



For more information, please contact Emily  
WA: 07939310881 E: [easdogshow@icloud.com](mailto:easdogshow@icloud.com)





## DIDMARTON RURAL CINEMA

**Friday 8th March**

**Doors open at 6.30pm for cash bar**

**Film starts at 7.30pm**

**£5 entry**

### **A Haunting in Venice**

"A Haunting in Venice" is set in eerie, post-World War II Venice on All Hallows' Eve and is a terrifying mystery featuring the return of the celebrated sleuth, Hercule Poirot. Now retired and living in self-imposed exile in the world's most glamorous city, Poirot reluctantly attends a séance at a decaying, haunted palazzo. When one of the guests is murdered, the detective is thrust into a sinister world of shadows and secrets.

The ensemble cast includes Kyle Allen, Camille Cottin, Jamie Dornan, Tina Fey, Jude Hill, Ali Khan, Emma Laird, Kelly Reilly, Riccardo Scamarcio, and Michelle Yeoh.

Please make contact if planning to attend to ensure enough seats put out! (email or text) [jenny.body1@gmail.com](mailto:jenny.body1@gmail.com) 07875406





# TETBURY GOODS SHED

## ARTS CENTRE

### MARCH HIGHLIGHTS AT TETBURY GOODS SHED



- March 2** **Ninebarrow:** Multi award winning folk duo Jon Whitley and Jay LaBouchardiere return to The Shed with their music which is rooted in the English landscape. Tickets £16.50 in advance. 7.30
- March 9** **Flotsam and Jetsam:** Lempen Puppet Theatre introduce us to two charming puppets from different worlds learning to work together. Children from 4 plus Tickets £8. 1130-1230
- Alder and Middleton:** Soprano Louise Alder and pianist Joseph Middleton are squeezing in a special concert before their Wigmore Hall appearance! Tickets £22 in advance. 7.30
- March 16** **Comedy Club:** This month we feature Susan Murray, Eva Bindeman and Mike Cox in a hilarious combination. Tickets:£13.50 in advance. 8pm
- March 23** **The Pirates of Penzance:** Set sail with Cardiff Opera on their Tetbury debut with this Gilbert and Sullivan classic. Tickets £ 12.50 in advance. 7.30

**For more details of our other events including film, talks, exhibitions, and afternoon tea concerts and to book tickets visit our website:**

**[www.shed-arts.co.uk](http://www.shed-arts.co.uk)**

## LEIGHTERTON PRIMARY SCHOOL

At Leighterton, we are really fortunate to be able to take part in a huge range of sporting activities.



My favourite hobby is running and every Tuesday before school begins, we have a cross-country club that we can sign up for to run. Each Tuesday about ten of the Key Stage Two children meet up before school, with Mrs Walker to go for a run. Usually, we run inside the school grounds but on the last run of the term, we run around the village and some of our parents join us.

Every morning in Leighterton, everyone (children and adults) participate in the daily mile. We bring out a speaker and music is played as we all run together. It is great fun. It does not matter what year group you are in because the older children encourage the younger children to keep going. The older children are fabulous role models for the younger children and the younger children really look up to us.

Already this year, the Leighterton cross-country team have taken part in many events. The first one was at Dursley Rugby Club and I really pushed myself to try my hardest to run as fast as I could and I felt extremely proud of myself when I came first. Only yesterday, many of the Key Stage Two children were invited to take part in the Westonbirt cross-country event and we ran against schools from Gloucestershire and much further afield. There was an amazing team atmosphere because the Leighterton team supported each other and many of our parents came along to cheer us on too. As always, everyone tried their hardest to improve on their previous result and there were a lot of celebrations as our team came to the finish line in each race.

We feel very lucky to be given so many opportunities at Leighterton and we know that our teachers and sports coach help us to get better at running by teaching us skills. Our parents are great too as they always give us lifts to events.

*By Lilly*

We do have some spaces in just a few of our year groups and if you would like to find out more, please have a look at our website at: [www.leighterton.com](http://www.leighterton.com) or contact Claire, in our school office (01666 890273), to arrange a convenient time to come and look round.

## PHOTOS



## YOUR MIND & BODY MATTERS

I was wondering what to write about this month, and this morning I walked into Morrisons and was overwhelmed by the amount of cakes, pastries and buns that welcomed me. I thought, how we really are fast racking to an early grave (via the NHS who is already not coping) with all the ailments that these foods along with other processed foods bring. Whilst a treat now and then is fine but not every day especially if it's in the form of what I just feasted my eyes on!

Again, it come backs to taking responsibility and having the self discipline to be able to walk straight to the aisles we need, giving these tempting shelves a wide berth and as I've said before buying food that replenishes our bodies rather than deplete them. Food is medicine and yes Valentines will have been and gone and that's fine, chocolates and fine dining for Valentines is fabulous, the same for anniversaries, birthdays and other celebrations but let's get back on track and enjoy real food that won't do us harm.

Michael Mosley on channel 4: Secrets of Your Big Shop was brilliant - catch up on Channel 4. It really exposes foods people buy with no idea of the harm they are doing to themselves, if you haven't watched, I would highly recommend.

Ruth x



### BRAINTEASER 4 —Entrances

- |            |            |
|------------|------------|
| 1. W L 9 5 | 2. L G 6 7 |
| 3. F 5     | 4. M 9     |
| 5. L B 6 3 |            |

## March 1976 AS 'Twas 48 years ago

### Didmarton as it is recorded in the 'DYDDI digest'

(This magazine has been published every month since No. 1 in October 1975.)

The magazine was called 'Diddy-Ditty' for the first fifteen months, before taking its current name, and "more than 100 copies are distributed free of charge monthly in the village." Today that number has doubled and goes to a wider local area. Copies were posted to those who wished to remain in touch and in 1976 a letter had been received from Majorca with news from earlier occupants of West End House, Mr and Mrs. Davis.

Meanwhile, Didmarton Playing Field Committee, now known as 'The DCC', was asking: "Does the village want or need a new meeting place? If so, what sort, where and when? Badminton Estate Office has not put a life (*sic*) on the Reading Room, but we must be ready if and when a time limit is given for a closure." It took a few years to arrive but our present Village Hall was conceived there and then. Originally a farmhouse, the Reading Room building has since become homes for a number of our residents.

"It was my first time in an aeroplane, leaving Gatwick on a BAC 11 at 8.30. Our first sight of the English Channel ... and the beauty of the Alps was the talking point of us all until we touched down in Venice." So wrote Julie Crewe after a school skiing trip in late January 1976. "We were able to go to the disco or ice-skating in the evening. We were told by the teacher that skiing would reduce our weight but three lads lost more – they each broke a leg which was due to tomfoolery." Some things never change.

The DD had a 'Personality Page' about a well-known resident in Didmarton and, in March 1976, it was the turn of Bert Buoy. Readers learnt that Bert, born in 1898 at Hinton, had come to Didmarton when he was 17. He worked at Manor Farm, Oldbury before enlisting in the army. Bert served in France until being taken prisoner of war. On returning in 1918 he held a number of posts as 'Footman' at Sopworth House, Kingsmead in Didmarton, and in London before returning to the village and working for the council. Marrying in 1940, there were two sons and a daughter and the Buoy family remain popular residents of this village to the present day.

Like a continuing echo, the March 1976 'Diddy-Ditty' looked back and reprinted an announcement from the 'Didmarton Parish Magazine' of 1914. It reported that Hubert Baker had been wounded in the Great War and was in hospital. In 1976 his son, Bert, was living at 29 The Street.

-The above 'digest' of a previous edition is taken from the Village Archive of Dd-





## SHERSTON GARDENING CLUB

Next Meeting  
**Tuesday 6th February 2024**  
Speaker is Hortico's  
**Piers Lavan**

### Cuttings

Hortico owner, Piers Lavan, delivered an insightful talk at our February meeting. Piers, whilst recognising the environmental impact of using peat in compost, nevertheless has a few reservations about some peat-free brands on the market. "You know what has been taken out but not necessarily the value of the substitutes that have gone in." Passing round plastic containers of peat-free ingredients, rather like a scene from a 1970s Tupperware party, Piers described the relative merits of each one and left members with the thought that a longer phasing out time would benefit both growers and gardeners alike. Thought-provoking indeed!

Our March meeting profiles one of the 20<sup>th</sup> century's most famous garden designers and writers, Rosemary Verey OBE VMH. Guest speaker, Margie Hoffnung, worked with Rosemary for over a decade so has knowledge and personal experiences to draw on for her talk. Not to be missed.

### Clippings

Club meetings will remain throughout 2024 on the first Tuesday of each month at the British School Room, Cliff Road, 7.00pm for 7.30pm start. Refreshments, plant ID, plant sales, raffle, gardeners' question time, and jobs to do for the month (helpful, if you don't subscribe to Gardeners' World).

New members from Sherston and surrounding villages are always welcome. The cost remains the same as last year: £15 single, £25 joint, U18's free. For membership form and full programme contact our Secretary: [sherstongardeningclub@gmail.com](mailto:sherstongardeningclub@gmail.com) Furthermore, all new members who join between January and March 2024 will have valid membership until April 2025, so it's a bargain!

### Calendar 2024

5th March	'Rosemary Verey, her legacy to C20th gardening' with Margie Hoffnung
2nd April	'Four Seasons Cotswold Style' with Mandy Bradshaw
25 <sup>th</sup> April *	Trip to Wisley Gardens (see below)
7th May	'Stumperies, Ferns and Shady Friends' with Andrew Tolman Judging by Liz Cooper of our Spring Bulb Photographic Competition
4 <sup>th</sup> June	'Growing Clematis and other Climbers' with Andrew Jeanes
12 <sup>th</sup> July (Friday)	Summer Social at The Garden House, Westonbirt (thanks, Clare & James Turner!)
August	No meeting but there will be a trip TBC
3 <sup>rd</sup> September	'Garden Design for Nature and Wellbeing' with Rachel Emous-Austin
1 <sup>st</sup> October	'Growing a Cut Flower Garden' with Rachel Golding Barrett
3 <sup>rd</sup> December	'The Victorian Gardener' (with Christmas theme) with Francis Burroughes

### Concluding

RHS Wisley Tickets may still be available for our coach trip to one of the most beautiful of all RHS gardens, particularly in springtime. Coach leaves the Angel at 9am, returning by 6pm. It's worth checking with our Secretary about tickets which cost £30 all-inclusive.

Other visits to Lackham Campus of Wiltshire College as well as NGS garden visits are also being finalised. More details will follow. Finally, if anyone has a request or suggestion about a favourite local garden to visit, then we are all ears!

## J.J's Gardening Blog

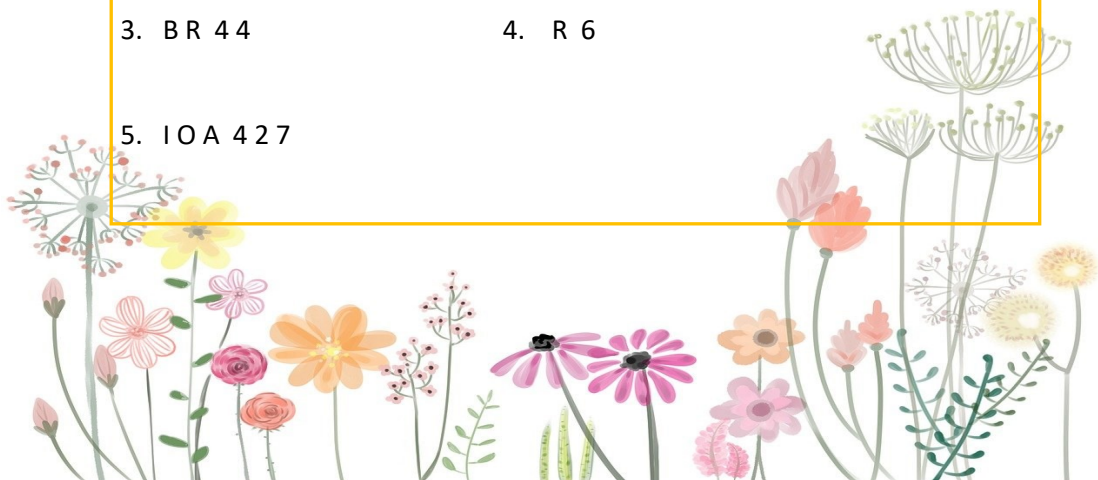
Well, the bulbs are pushing up through the soil and the snowdrops are putting on a good show. Pick a few to put in a small vase near where you sit or on a bedside table. It really lifts one's spirits. Some coloured stems, such as red cornus also are worth picking. Maybe plant one or several in your garden. Something evergreen or variegated near the front of a border or close to where you come in and out cheers things up. Potentially growing to about five feet tall is *Fatsia japonica*, evergreen and also variegated, with quite large hand shaped leaves. But it does look a bit exotic at this time of year and different.

The pots could probably do with a freshen up. Small daffodils, crocus, short iris *reticulata*. Try to add some new potting soil whenever you add new plants to troughs etc. Keep an eye out for how big a plant is growing in your scheme and before it gets too big use the secateurs. The plant will then stay compact



### BRAINTEASER 5 —British Isles

1. L 5
2. I O D 4 2 4
3. B R 4 4
4. R 6
5. I O A 4 2 7



# SUDOKU by Neil Fozard

For the uninitiated

Each row, column and 3x3 box must contain each of the numbers 1 to 9

## EASY !!

				1	4	7	8	
	1	8	9					5
2	4		5		7			1
		7			9	2		4
	8			4				3
						8	7	
	3				6		2	
		2		9		6	3	
						1		

## NOT SO EASY !!

		6	2					4
	8		4	9				
								8
		4	9		8	3		
		9	5		1	6		
		5	7		3	2		
6								
				5	4		2	
1					2	8		

Answers to the February quizzes:

'Easy'

8	4	9	7	2	3	6	1	5
5	3	7	8	6	1	4	2	9
6	2	1	9	5	4	7	8	3
3	6	5	2	4	8	9	7	1
9	8	4	5	1	7	2	3	6
7	1	2	6	3	9	5	4	8
4	9	6	1	8	2	3	5	7
2	5	8	3	7	6	1	9	4
1	7	3	4	9	5	8	6	2

'Not so Easy'

2	6	9	5	1	8	3	4	7
4	1	5	3	7	6	9	8	2
8	3	7	4	9	2	1	6	5
9	7	3	6	8	1	5	2	4
5	8	4	7	2	3	6	1	9
6	2	1	9	5	4	7	3	8
7	4	2	1	6	9	8	5	3
3	9	6	8	4	5	2	7	1
1	5	8	2	3	7	4	9	6



## VICAR'S LETTER

Dear All,

In preparation for Lent, I've been studying the book of Revelations. I have been learning from an American evangelist from the deep south and from a Biblical teacher in London.

Comparing the two approaches to scripture has been fascinating. One is full of diatribe against Catholicism, and the liberal thinkers of the western theological tradition, enjoining one to believe in Jesus or face the consequences. The other is a more learned approach to the historical background and is less preachy.

You would think that the first would be less popular than the more up-to-date liberal teacher. But you would be wrong. And this reflects the situation with religion today. Neo-Conservative approaches to religion are very popular, whereas the more gentle Christianity that we are used to in the countryside, is less so.

Why is this? The answer is probably very simple. People follow a faith for different reasons. Currently, people are gravitating towards the authoritarian, absolutist type of religion, which condemns all else besides. The inclusive, more moderate position of the liberal tradition, welcoming all faiths, and none, seems to be not so well supported.

Where does this leave the parish Church? Surely, we can not believe that God ignores other religions or indeed our faith is the only true one? And yet, we do believe that God challenges us to believe. Whether in Jesus or Allah, or whatever name God is called. To accept God and follow God, requires sacrifice and urgency. To use a football analogy- The playing field might level, but the goals still need to come.

It does matter whether or not we believe, or whether we respond to Truth and act justly. It also matters that we are not blinkered nor bigoted. Evil is wrong, and it must be fought against. We think God exists, but God does go by many different names, even perhaps by the name 'atheism', which has a respected theological pedigree behind it believe it or not (called the 'apathetic' way). And for sure, it is vital that we encourage people to take their faith seriously, and not be lukewarm.

Have a Happy March,

Richard

Priest in charge, Badminton Benefice website: [www.badmintonbenefice.com](http://www.badmintonbenefice.com)  
[revrichardthomson@gmail.com](mailto:revrichardthomson@gmail.com)

01454 219236

## CHURCH OF ENGLAND BADMINTON BENEFICE

Mar-24 Parish Church services:			(Clocks go forward on 31st March)	
Date	Time	Parish	Service	Minister
3th February <b>Lent 3</b>	9.30am	Lasborough	Matins	Churchwarden led
	9.30am	Hawkesbury	Parish Communion CW	Rev R Thomson
	1115am	Didmarton	Matins	Rev R Thomson
	3pm	Acton Turville	Evensong	Rev R Thomson
10th February <b>Lent 4 and</b>  <b>Mothering</b> <b>Sunday</b>	9.30am	Lasborough	Holy Communion BCP	P Cheeseman
	9.30am	Leighterton	Holy Communinon 1928	Rev R Thomson
	1115am	Little Badminton	Matins	Rev R Thomson
	5pm	Hawkesbury	Evensong	Rev R Thomson
18th February <b>Lent 5</b>	8.30am	Didmarton	Holy Communion BCP	Rev R Thomson
	10.00am	Hawkesbury	Family service	Rev R Thomson
	1115am	Sopworth	Matins	Rev R Thomson
	3pm	Acton Turville	Evensong	Rev R Thomson
24th February <b>Palm Sunday</b>	9.30am	Lasborough	HC CW	Rev R Thomson
	1115am	Little Badminton	Matins	Rev R Thomson
	5pm	Hawkesbury	Evensong	Rev L Maydew
29th March <b>Good Friday</b>	12 noon	Little Badminton	Good Friday Liturgy	Rev R Thomson
	1.30pm	Hawkesbury	Readings and music	Rev R Thomson
	2.30pm	Hawkesbury	Walk up the knoll to the Cross	Rev R Thomson
31st March <b>Easter Day</b>	9.30am	Leighterton	Holy Communinon 1928	Rev R Thomson
	1115am	Didmarton	Matins	Rev R Thomson
Online 9.30am every Thursday		Ask vicar for link	Matins	Rev R Thomson
Readings:		<a href="http://www.badmintonbenefice.com">www.badmintonbenefice.com</a>		



## DIDMARTON CONGREGATIONAL CHURCH



As we approach the celebrations of Easter, what amazes us is the greatness of God's love for us who are sinners, which is made clear by the sacrifice of his beloved son Jesus Christ on the cross. Here is the evidence we need that God desires us to be reconciled to him and become part of his redeemed people, brought back from slavery to sin and its' consequence.

In his life, Jesus demonstrated all we need to know about the reality of who God is, for he was the visible form of the invisible God and was able to say 'He that has seen me has seen the father'. Jesus went to the cross to accomplish the amazing grace of God's mercy for us.

Jesus set his face to go to Jerusalem offering no resistance to his captors for this was the purpose for which he came into the world, to suffer, bleed and die to give us his life, a ransom for many. Here we have the outpouring of God's love in offering of the pure and sinless body and blood of the precious son of God, for the guilt and sin of you and I.

Jesus was able to say 'It is finished' for he achieved all he had come to achieve for us who are unable to achieve for ourselves, however good we may appear to be, for God looks at the heart and says 'All our righteousness is as filthy as rags' in his sight.

It is to the cross we can come, weighted down with our heavy burden of sin and lay it down at the feet of Jesus and, looking up to him we see the welcoming hands outstretched and receive the forgiveness and be made right with God.

Only Jesus can wash us from our sin, which he waits to do for you as you come humbly before him, hating the sin which took him to die for us, confessing the sin and pleading his precious blood for its' remission.

Repent therefore and turn in faith to Jesus and receive the new life Jesus offers you by his resurrection. May we be able to say with the apostle Paul 'God forbid that I should glory, save in the cross of our lord Jesus Christ'. This is what Easter offers you. Will you respond to him?

*Royston Pick*

## DYDDI ADVERTISING

This form with payment should be submitted in advance.,

<b>PRO FORMA Invoice No.</b>		<b>Name &amp; Address of Advertiser</b>	Powered Spaces Ltd Furrows, Drake Lane, Cam, Dursley. GL11 5HD
<b>Date</b>	03/10/23	<b>Phone &amp; Email</b>	01453497044 mark@poweredspaces.com
<b>Order No.</b>		<b>Invoice Address if different from above</b>	Same
<b>Account No.</b>			

Code	Size		Price 12 issues	Issues	£
11	¼ Page		£125	12	125
21	½ Page	12.5cm x 9cm	£195	12	
31	Full Page		£375	12	
			Total		
			Payment method	BACS	

**Please submit your ready-to-print artwork as a Word or PDF file**, with the correct dimensions.  
If you need help with artwork/sizing, we will do our best to assist but this may delay your entry and incur additional cost.

Email completed form to [mhewlett@live.co.uk](mailto:mhewlett@live.co.uk)

**BACS payment**  
**Sort Code: 30-91-99**  
**Account number: 02319866**  
**Account name: Didmarton Village Hall**



## AllAbout Sites—Bespoke Website Sensible Prices

---

*I promise she will do a **VERY good job**—Jonty Evans Olympic Eventer*

AllAbout Sites is all about keeping things simple. Moving at your pace I deliver well designed websites that work and are Google Optimised. Specifically aimed to help small business, start-ups and technophobes.

[info@allaboutsites.co.uk](mailto:info@allaboutsites.co.uk)

**07833 433337—Roxzanne Fox-Roberts**

*Wow since Roxzanne sorted my website traffic has increased and bookings are up, I would highly recommend her professional services, fantastic job!"*





Your local Multi-Award winning Landscaping & Garden Design specialists

For a free estimate contact Chris Blackwell:

**m: 07939 101520 t: 01453 835032**

**e: [chris@goldenstones.co.uk](mailto:chris@goldenstones.co.uk) [www.goldenstonesgardening.co.uk](http://www.goldenstonesgardening.co.uk)**

**MATTHEWS  
OF MALMESBURY**

Est 1880

**01666 822216**

7 Burnham Road, Malmesbury  
Wiltshire SN16 0BQ

[www.matthewsofmalmesbury.com](http://www.matthewsofmalmesbury.com)

**Independent  
Funeral Directors**

24 hours a day, 365 days a year.  
Interest free pre-payment funeral plans.

**OUR FAMILY WILL CARE  
FOR YOUR FAMILY**



Golden Charter  
Funeral Plans





## MILK VENDING MACHINE

Enjoy our Udderly Delicious Fresh Whole Milk as much as we do.

Gently pasteurised on our small family farm, in Leighterton.

Find us @

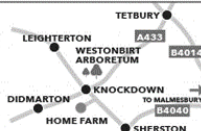
Bennetts Farm Shop, Leighterton.  
What3Words - hires.duration.roof

Self Service, Card Only, Easy To Use Glass Bottle and Milk Vending Machines.

Enjoy a milkshake from our  
**MOOSHAKE BAR**



OPEN DAILY



From December 2020 we will be located in our brand new premises around the corner at Home Farm

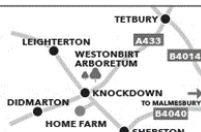
ALL MAKES OF CARS, FOUR WHEEL DRIVES AND LIGHT COMMERCIAL VEHICLES

- MOT Testing Class 4 and now Class 7
  - Vehicle Repairs
  - Servicing
  - Diagnostics
- Free loan cars are available

Call us on 01454 238 700  
or visit [www.mottetbury.co.uk](http://www.mottetbury.co.uk)



HOME FARM, KNOCKDOWN, TETBURY GL8 8QY



From December 2020 we will be located in our brand new premises around the corner at Home Farm

ALL MAKES OF CARS, FOUR WHEEL DRIVES AND LIGHT COMMERCIAL VEHICLES

- MOT Testing Class 4 and now Class 7
  - Vehicle Repairs
  - Servicing
  - Diagnostics
- Free loan cars are available

Call us on 01454 238 700  
or visit [www.mottetbury.co.uk](http://www.mottetbury.co.uk)



HOME FARM, KNOCKDOWN, TETBURY GL8 8QY



## MILK VENDING MACHINE

Enjoy our Udderly Delicious Fresh Whole Milk as much as we do.

Gently pasteurised on our small family farm, in Leighterton.

Find us @

Bennetts Farm Shop, Leighterton.  
What3Words - hires.duration.roof

Self Service, Card Only, Easy To Use Glass Bottle and Milk Vending Machines.

Enjoy a milkshake from our  
**MOOSHAKE BAR**



OPEN DAILY



# **JUST HEATING LTD**.CO.UK

Your Local Oil, Gas and LPG Central Heating Specialists

We are proud to employ a fantastic team of Gas Safe and OFTEC qualified engineers who are committed to providing great service.

Our reputation has been developed through hard work and reliability making us the number one choice.

- Boiler Servicing and Repairs
- Boiler and oil tank replacements
- Hot water cylinders and radiators
- Free no obligation quotes
- Up to 12 years warranty
- 0% Finance



**01249 309 309**

**info@justheatingltd.co.uk**

**www.justheatingltd.co.uk**

2 The Old Dairy  
Charlton Park Estate  
Malmesbury, Wiltshire  
SN16 9DG

\*T&C's apply



Proud members of  
**Checkatrade.com**  
Where reputation matters





## EV Charger Installations

Installation, servicing, repair

Free, no obligation quote.

Accredited by all major manufacturers

Fully insured and NAPIT registered.

Tel: 01453 497044

Email: mark@cotswoldcarcharge.co.uk

WWW.COTSWOLDCARCHARGE.CO.UK



*Lucy Tom*  
INTERIORS

Sherston Soft Furnishing Studio  
Noble Street, Sherston SN16 0NA

01666 841433

07813 877509

lucy@lucytom.com

- Projects undertaken in all areas of interior design and styling
- Curtains and blinds handmade by our experienced team
- Extensive library of fabric pattern books
- In-house modern and traditional upholstery
- Box seat and scatter cushions
- Visit our shop for homewares, gifts, greetings cards and much more!



The on-site **Courtyard Café** serves  
Espresso Coffee, Hot Chocolate,  
Herbal Teas, Home-made Cakes,  
Sandwiches and Toasties

Ask  
us about  
**INTERIOR  
SHUTTERS**  
from Shutter Frontier



# GAS BOILER SERVICE



Regular servicing helps...  
 \*appliance efficiency  
 \*reduce breakdowns  
 \*keep your household safe!



plumbing and heating



01666 503 632

info@indplumbingandheating.co.uk  
 indplumbingandheating.co.uk

Alderton 4, Priory Park, Priory Industrial Estate, London Road, Tetbury, Glos, GL8 8HZ

NOW ACCEPTING STUDENTS!

FIRST STEPS &  
 CARLY ELIZABETH  
 SCHOOL OF DANCE  
 HAWKESBURY - UPTON

We welcome students of all ages and skill levels.  
 Pre-School/Baby Ballet - Advanced

CLASSES AVAILABLE WITHIN  
 HAWKESBURY UPTON VILLAGE HALL GL19 1AU

I.S.T.D GRADES, VOCATIONAL & PROFESSIONAL DANCE  
 EXAMINATIONS  
 IMPERIAL BALLET - MODERN - TAP - JAZZ

Competitions / Exams / Festivals / Shows

Instagram icon, Facebook icon

Imperial Society of Teachers of Dancing  
 Registered Member

Email - carly\_hall@hotmail.co.uk  
 Telephone 07540339511



The  
**GEORGE**  
 Veterinary Hospital



A 24 hour emergency service on your doorstep  
 delivered by the vets who know your pets best

Malmesbury

01666 823165



You can book appointments online too - scan me!



01666 826456



HELPING OUR CUSTOMERS GET  
THE MOST FROM COUNTRY  
LIVING FOR GENERATIONS



## VISIT OUR COUNTRY STORE

Open to the public and trade  
customers

Animal Feeds  
Animal Bedding  
Gardening Equipment  
Country Clothing  
Footwear



**AUTO  
GLYM**

*Levington*

**SPEAR &  
JACKSON**

**AIGLE**  
DEPUIS 1853

**EGO**

**V12**  
POWERLAW

**Hoggs of Fife**  
1888

**SKINNER'S**



**T H WHITE**  
COUNTRY  
STORE

Sherston Works  
Knockdown  
Tetbury Glos GL8 8QY  
**01454 238181**  
[www.thwhite.co.uk](http://www.thwhite.co.uk)



THE  
KING'S ARMS

**The Street, Didmarton GL9 1DT - 01454 238 245**

[kingsarmsdidmarton@butcombepubs.com](mailto:kingsarmsdidmarton@butcombepubs.com)

## **LADIES NIGHT**

**Wednesday 6<sup>th</sup> March**

The first Wednesday of the month Gather with your girlfriends for drinks in the bar

## **LIVE MUSIC**

Every other Friday 7pm—9pm

**Friday 8<sup>th</sup> March** - Katie Harrison    **Friday 29<sup>th</sup> March** Tom Martin

## **MOTHER'S DAY**

**Sunday 10th March**

booking advisable - Sunday lunch plus specials will be available! Butcombe loyalty members get 3 courses for the price of 2 after 3pm every Sunday!

## **6 NATIONS**

showing all games in the bar! Butcombe Beer Club – buy 5 pints, get the 6<sup>th</sup> free (Butcombe loyalty members only)

## **WE'RE HIRING!**

We are on the look out for a friendly, charismatic and experience team leader to join our front of team full time.

**Please call the pub on 01454 238245**

if you want to enquire about the role and how to apply!