

Selva3D app – pictures to 3D models

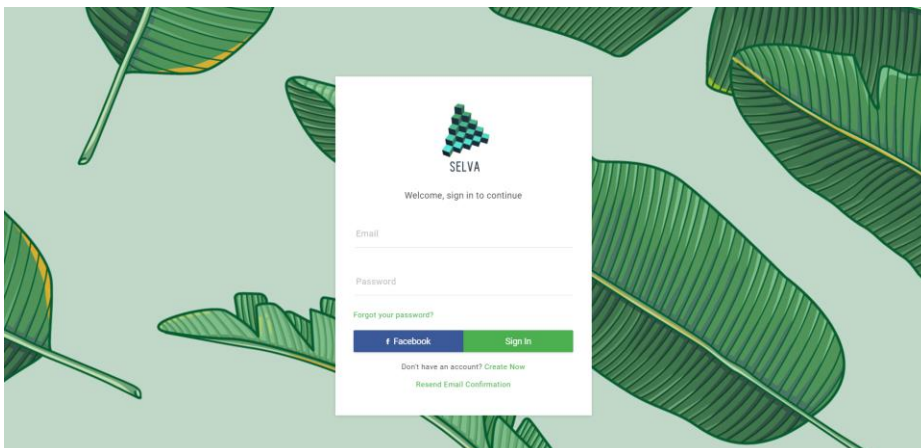


Hello,

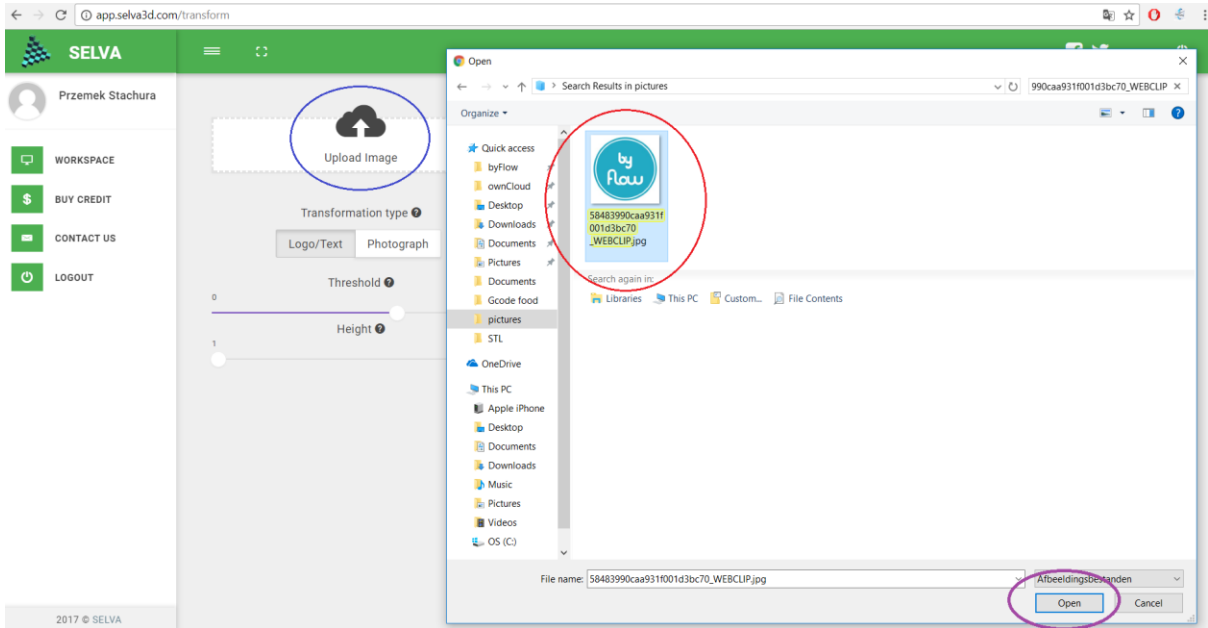
We are very happy to present you a very simple way to transform images to 3D printable files. Now you will be able to prepare and print a logo of your company, hand-drawn pictures of your children or even your own face! Ready? Go!



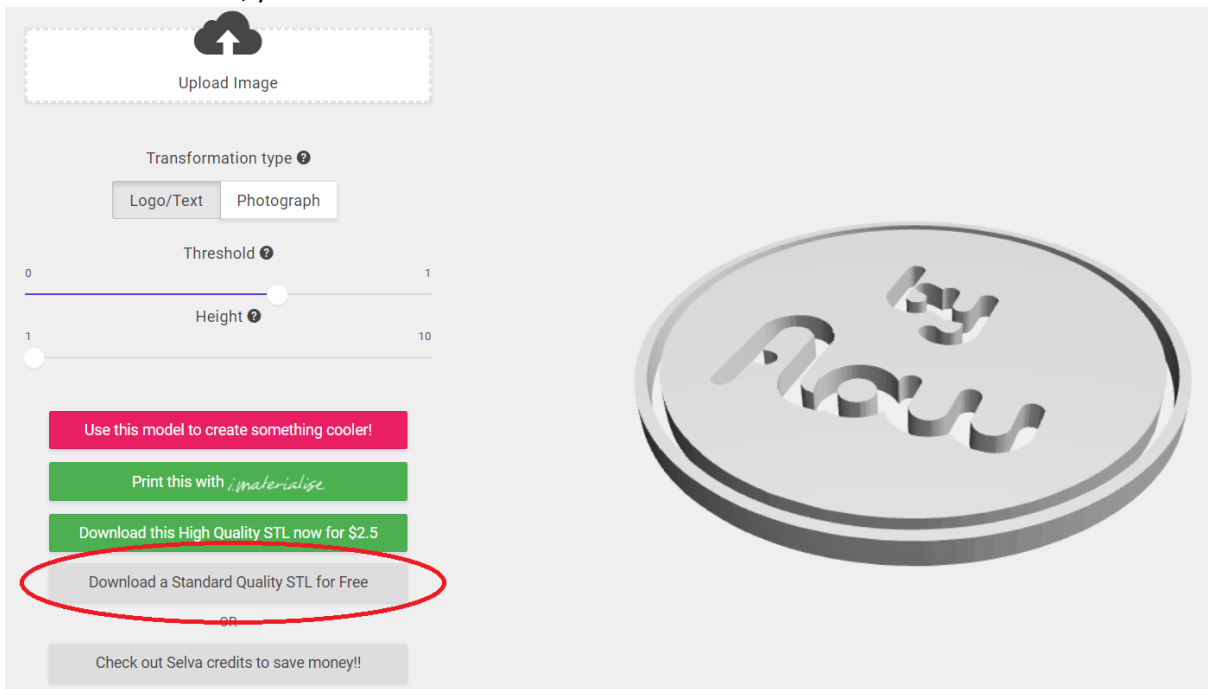
1. Go to <http://app.selva3d.com/transform> and make a free account or login via Facebook



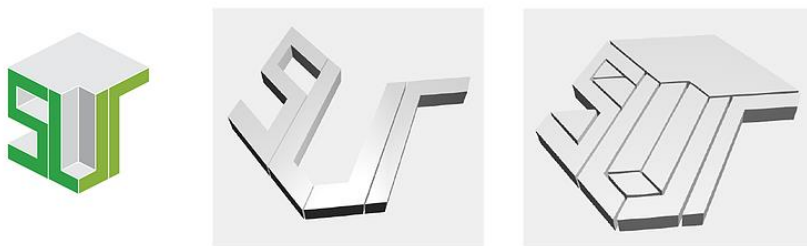
2. Open your image.



3. In few moments you will see the visualisation of the model. Click 'Download a Standard Quality STL for Free'. Due to free account, your 3D model will download in 1 minute.



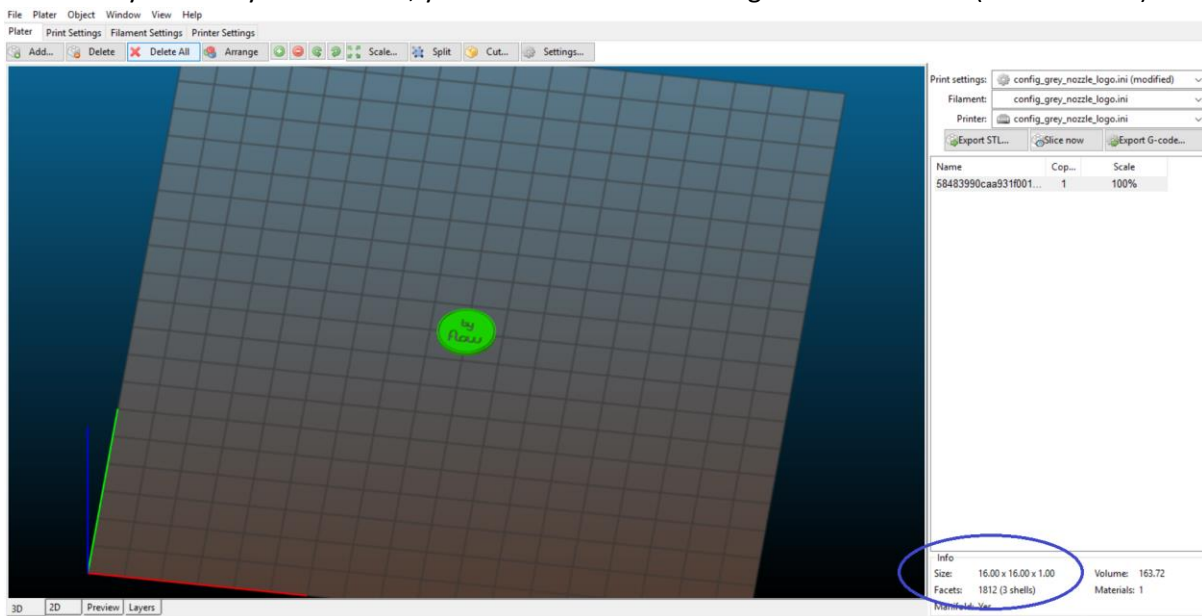
Note If you have multicolour logo and you would like to exclude/include lighter/darker colours of the image in your 3D model, change the Threshold value to select the shape that suits best.



Note You can also upload colourful photographs. It is very important to play with Threshold value to get the best representation of the original photo.

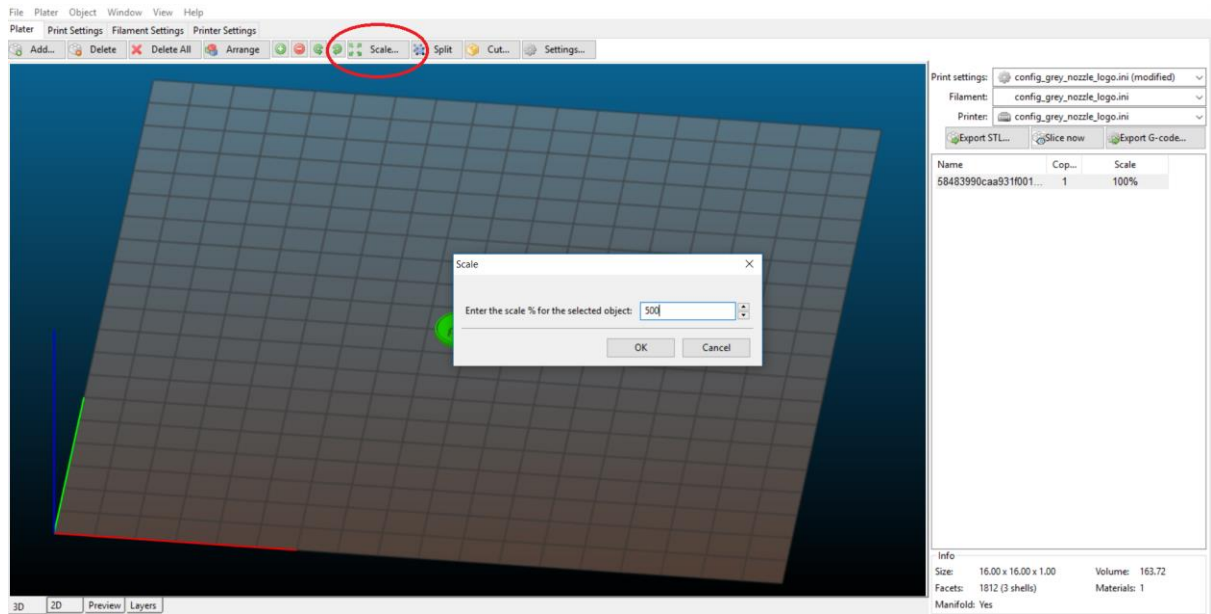


4. Open Slic3r software on your computer and File-> Load config file -> “config_grey_nozzle_logo.ini” to provide best settings for flat models. If you don’t have the config file, contact byFlow.
5. Add the model that has been downloaded. You will find it in ‘Downloads’ folder. Please note that the model will be very small. If you click on it, you can see its size in the right bottom corner (in millimeters).

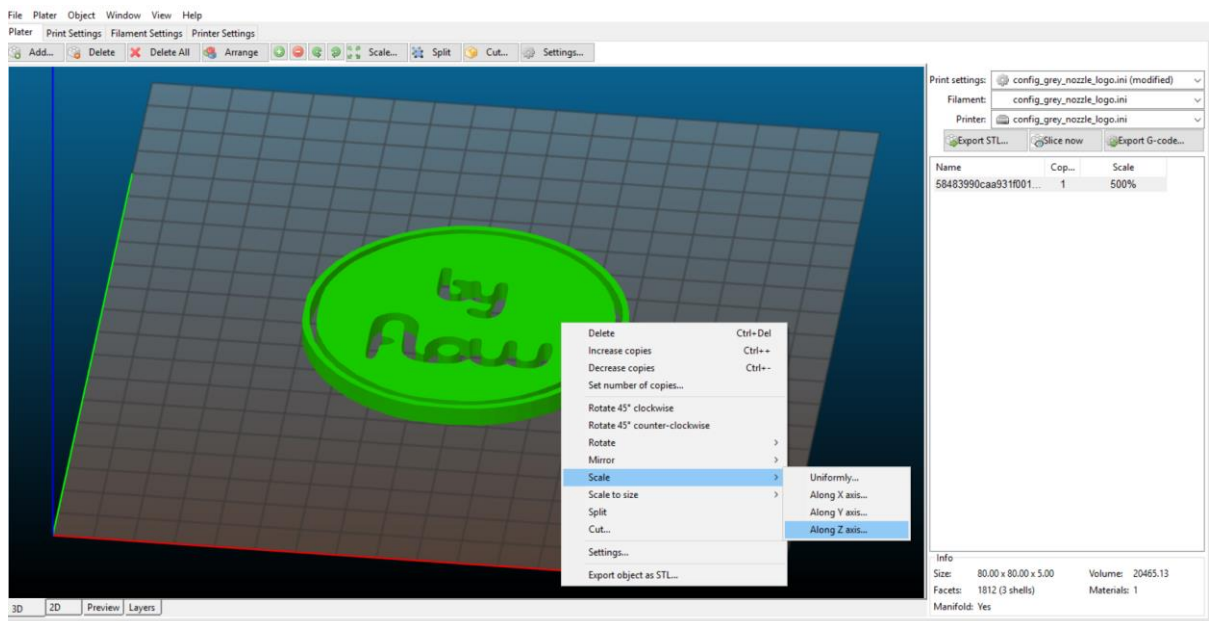


6. Scale the model to be able to print all details of your image.

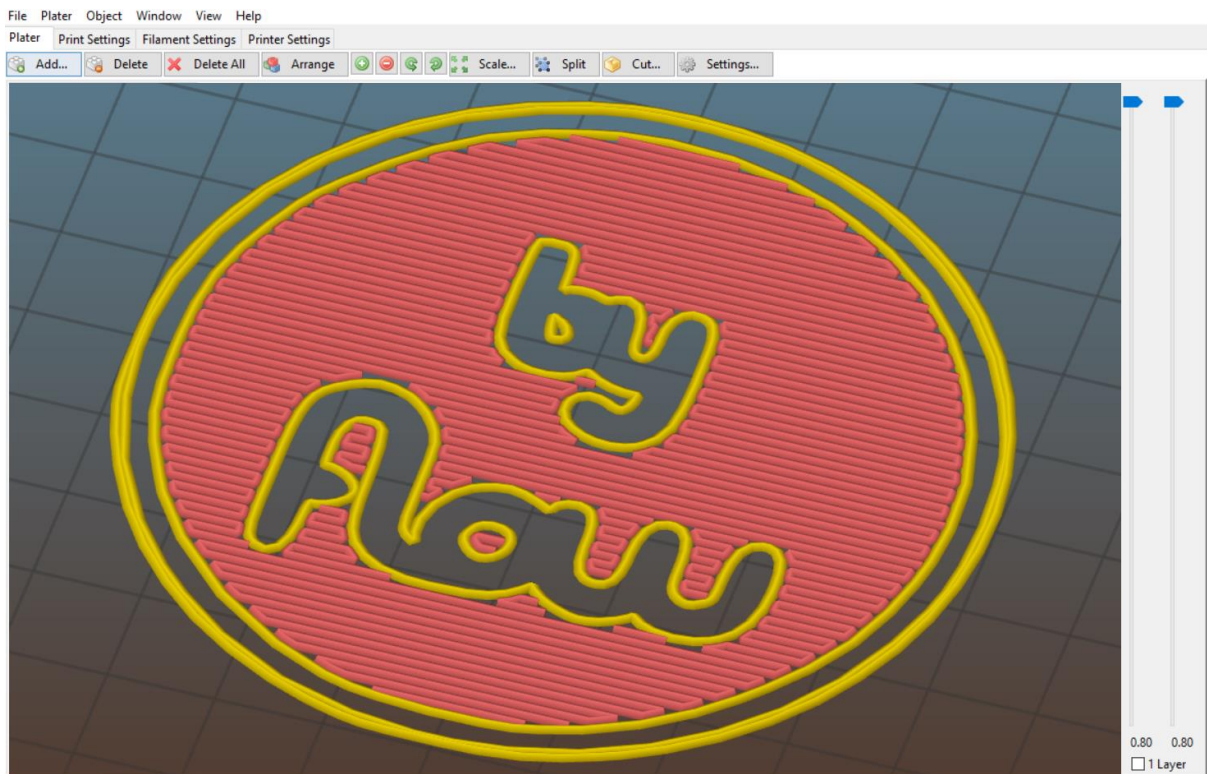
- a) Press the Scale button on top and put the value in % (if you want to scale it x5, put 500). It is recommended to have 100-150mm in size for not complicated images and ~180mm models for detailed images.



- b) The model has been scaled in every direction. However, it is better to keep the shape very low to print only 1-2 layers to save time and material. Right-click on the model -> Scale-> Along Z axis -> put % values how much you would like to decrease the height. It is recommended to have ~1mm high model, so if it is currently 5mm high, type 20 (%) to decrease it x5.



7. Click 'Preview' in the bottom left corner to see the visualisation of your print. You will see how the lines will print. If you see that there are not enough / too many lines in the model which might deteriorate the printing quality, you can slightly scale the model to adjust the quality.



8. Your file is ready! Click 'Export G-Code' in the top right corner, upload the file to the printer and print it with grey 1.2mm nozzle. If you want to print very detailed models with smaller, green 0.8mm nozzle, contact byFlow for configuration file.

Want to learn more about Selva 3D? Follow the explanation of the software <https://www.selva3d.com/single-post/2016/04/25/How-to-get-the-most-out-of-Selva-2D-to-3D-transformations>