



LAX

SHAY MITCHELL ON ABBOT KINNEY BOULEVARD IN LOS ANGELES



A pop culture phenom starts winding down this month when *Pretty Little Liars*, the drama that follows four tight-knit high school girls dealing with the disappearance of their friend, kicks off its final season on the Freeform channel. **SHAY MITCHELL**, who plays Emily Fields, reflects on *PLL*'s impact. "I hope the show can inspire women to stick together and build each other up, just as we girls have in our

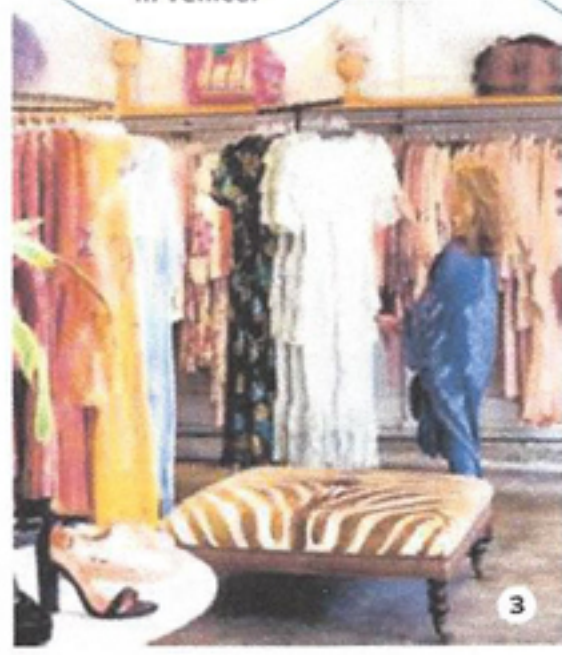
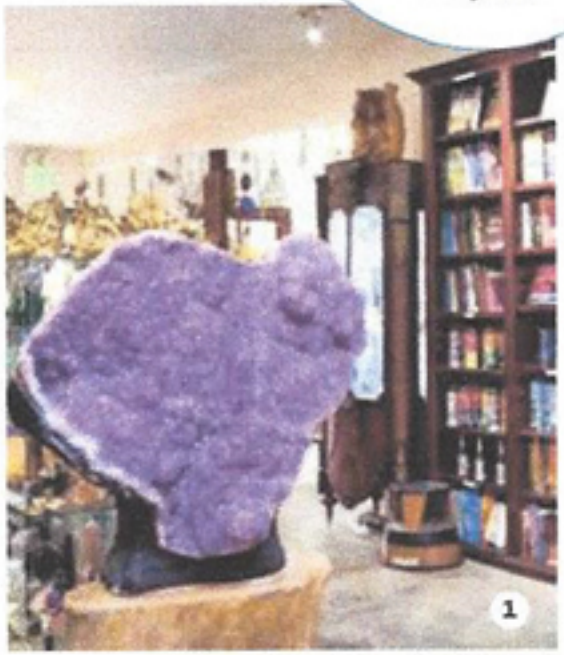
own reality," she says. Mitchell has broken out in a big way, amassing 15.6 million and counting Instagram followers over the past few years. So how does she travel? With the help of an app, naturally. Her go-to is Delightways, which takes users off the beaten path to discover overlooked local gems. Here's how she navigates arguably the hippest street in Southern California. — **MATT McCUE**

Mystic Journey Bookstore
This peaceful shop sells crystals, incense, spirituality books and tarot cards. "I love popping in here if I feel depleted or need some calming energy in my life."

Kelley Baker Brows
"I'm so lucky my brow girl is on this street—LOL! I refuse to use anyone else for my brows, so when I visit Kelley, I always spend an extra hour or two just walking around the street."

Principessa
"Sometimes I'll pop in and trade whatever I'm wearing for a floral romper or cute tank top," Mitchell says of this boho-chic clothing boutique. "I visit this store almost every time I'm in Venice."

Gjelina
This all-day spot has a cool beach vibe. "[It's] one of my favorite restaurants, and I always bring anyone that visits from out of town for their first or final meal."



- COORDINATES**
- 1 **Mystic Journey Bookstore**
1624 Abbot Kinney Blvd.
mysticjourneybookstore.com
 - 2 **Kelley Baker Brows**
1636 Abbot Kinney Blvd.
kelleybakerbrows.com
 - 3 **Principessa**
1323 Abbot Kinney Blvd.
principessavenice.com
 - **Gjelina**
1429 Abbot Kinney Blvd.
gjelina.com

ELIAS TAHARI/MITCHELL