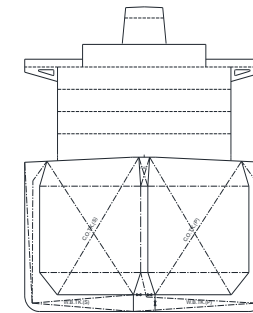
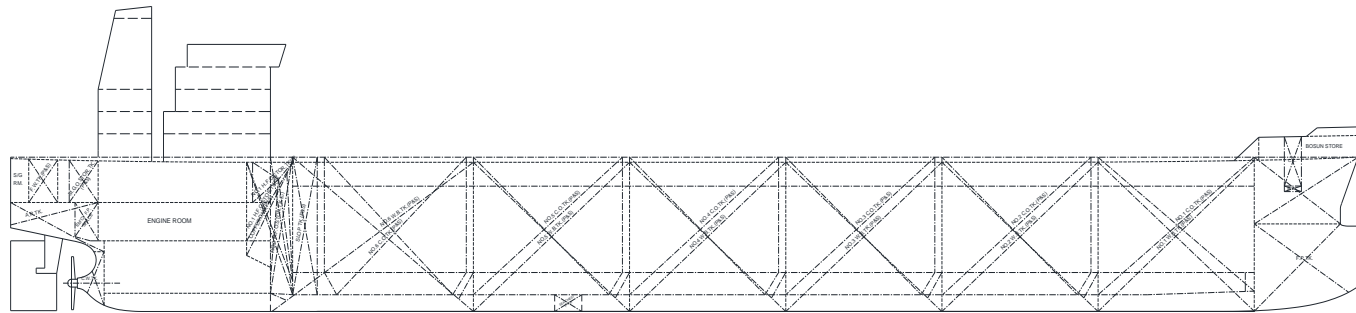


# 50,000 DWT CLASS PRODUCT AND CHEMICAL TANKER



## MAIN DIMENSIONS

Length over all	abt.	183	m
Length between perp.		175.15	m
Breadth moulded		32.2	m
Depth moulded		19.1	m
Draught design (Td)		11.0	m
Draught scantling(Ts)		13.3	m

## DEADWEIGHT

Deadweight on Td	abt.	38,000	MT
Deadweight on Ts	abt.	50,200	MT

## CLASSIFICATIONS

Class LR, +100A1,  
 Double Hull Oil and Chemical Tanker,  
 ESP, Ship Type 3, CSR,  
 +LMC, UMS, descriptive note:  
 ShipRight(BWMP(T))  
 or ABS/DNV GL equivalent notations

## TANK CAPACITIES

Cargo	abt.	54,200	m <sup>3</sup>
Heavy fuel oil	abt.	1,340	m <sup>3</sup>
Marine gas oil	abt.	300	m <sup>3</sup>
Fresh water	abt.	250	m <sup>3</sup>
Ballast water	abt.	21,500	m <sup>3</sup>

COMPLEMENT 25 + 6P

## MAIN ENGINE

HYUNDAI - WIN GD	6X52 or Equivalent
Nominal Rating	10,860 kW x 105.0 RPM
MCR	7,180 kW x 86.9 RPM
NCR	5,500 kW x 79.5 RPM

## SERVICE SPEED

Service Speed at NCR on Td	abt.	14.5	kts
Sea margin		15	%

## FUEL OIL CONSUMPTION OF MAIN ENGINE

D.F.O.C at NCR (Tier II)	abt.	20.5	t/day
--------------------------	------	------	-------

CRUISING RANGE (Tier II) abt. 19,800 NM

## NOx EMISSION

Compliance with IMO NOx Tier III in ECA

## CARGO SEGREGATION

Segregation	6	Seg.
Coating		Pure epoxy

## CARGO OIL PUMP

Type	Hyd. Driven Submerged.
Capacity	600 m <sup>3</sup> /h x 12 sets 300 m <sup>3</sup> /h x 2 sets

## WATER BALLAST PUMP

Type	Hyd. Driven Submerged.
Capacity	750 m <sup>3</sup> /h x 2 sets

## BALLAST WATER TREATMENT PLANT

Type	Electrolysis or Filter+UV
Capacity	1,500 m <sup>3</sup> /h x 1 set

## STEAM GENERATING PLANT

Auxiliary boiler	18,000 kg/h	x 1 set
Exhaust Gas Economizer	550 kg/h	x 1 set

## POWER SUPPLY

Diesel Generators	700 kW	x 3 sets
Emergency Generator	120 kW	x 1 set

## NAVIGATION EQUIPMENT

Radars ( ARPA )  
 Gyro Compass / Auto pilot  
 Speed log (Single axis)  
 Echo Sounder  
 DGPS Navigators  
 ECDIS (1 set)  
 BNWAS