

‘WOODGATE’ CANDIDATE LOCAL WILDLIFE SITE (LWS)

Land off Woodgate Road Burbage Leicestershire LE10 2UF



Date of report – June 2013

Applicant – Burbage Parish Council Millennium Hall Britannia Road Burbage
LE10 2UF, Principle Officer Julie Perrin

Contributors

Doctor John Bailey – University of Leicester Biology Dept. (Botany & Ecology)
– Plant species identification.

Jennifer Foxon - MBE, BSc Ecology (assistance with Ornithological
verification)

‘Ecology Group’

Local residents

Endorsement - Professor Ray Linforth Vice-Chancellor & Principal University
College Birmingham

CONTENTS	Page
Site overview and description	3
HBBC Biodiversity Map - Political	4, 5
Habitats	6
Tree Preservation Orders	7
Plant Life recorded	8
LWS Woodland	9
LWS Hedgerows	10 – 12
LWS Mature Tree	13, 14
LWS Grasslands	15
LWS Wetlands	16, 17
LWS Red Data Book Species Criteria	18 - 21
LWS Community Criteria	22
History & Rare Plants	23
Mammals	24
Conclusion	25
Appendix A. Personal evidence and recordings	26 - 28
Appendix B. Correspondence	29 - 31

Glossary

British Trust for Ornithology (BTO)
 Burbage Parish Council (BPC)
 Hinckley & Bosworth Borough Council (HBBC)
 Joint Nature Conservation Council (JNCC)
 Leicester, Leicestershire and Rutland Biodiversity Action Plan (LLRBAP)
 Leicestershire and Rutland Ornithological Society (LROS)
 Leicestershire and Rutland Wildlife Trust (LRWT)
 Local Wildlife Site (LWS)
 Royal Society for the Protection of Birds (RSPB)
 The Leicestershire and Rutland Environment Records Centre (LRERC)
 UK Biodiversity Action Plan listed (UKBAP)

Dates of Survey: - Continual assessment by local resident contributions commencing in 1996.

Grid Reference of site: SP4413893693 is just over 500 meters from existing SSSI Burbage Woods & Aston Firs seen on the right hand side.



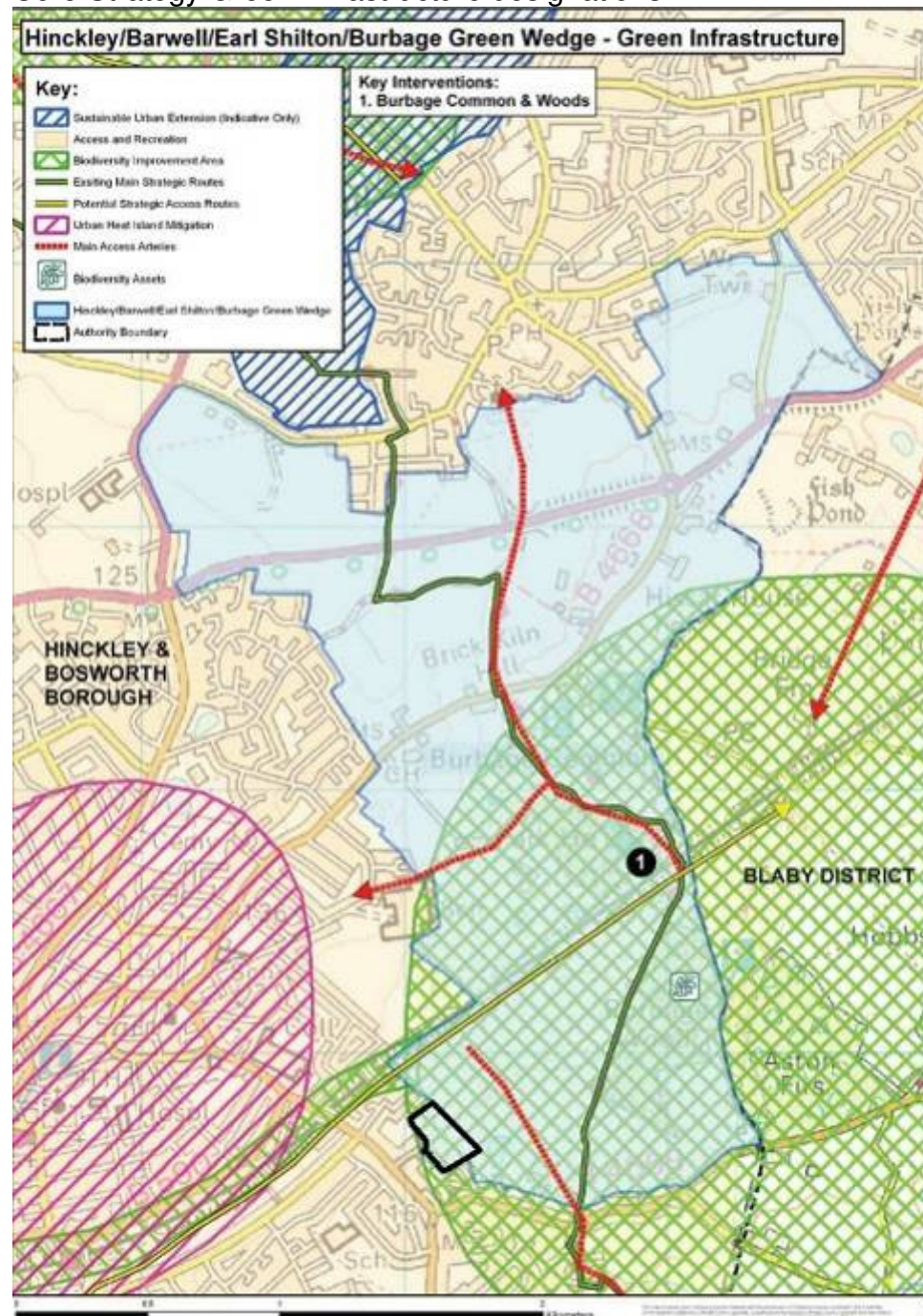
General description of site

Approximately 4 ha of two parcels of private land (marked out in red) either side of a Public Footpath U14 and Cartway leading from Woodgate Road Burbage LE10 2UF to Burbage Common & Woods (marked out in green). The site contains a mosaic of habitats including semi-improved neutral grassland, scattered scrub, dense scrub, tall ruderal, broad-leaved woodland-wetland, stream and ponds.

Study note, the site is privately owned with a public footpath/cartway through the centre, the field to the north of the Path/Cartway with a large pond in the centre is fenced/hedged to most but not all its boundary. The southern Paddock land (different owner) does offer access. Following a planning application 14th March 2013 to HBBC the following documents are publicly available to view Phase I Curious Ecology report (day time visit 7th September 2012 and night visit 8th September 2012) and fpcr Arboriculture Assessment report March 2013.

Available to download from HBBC planning web portal under 13/00117 FUL Curious Ecology report ^(cer) 15thFeb2013 – Technical Assessments /Appraisals /Surveys 12th Document
fpcr Arboriculture Assessment report ^(aar) 14thMar2013 - Arboriculture Assessment 77th Document.

HBBC Green Wedge Review December 2011
Core Strategy Green Infrastructure designations



Site in black outline, within the HBBC Biodiversity improvement area (Green cross hatched area). The site is located within HBBC 'Green Wedge'.

Quoted from the HBBC Green Wedge review

6.11.7 The review of green infrastructure highlights the important role that Burbage Common and Woods provides in terms of access to green space for residents whilst providing an area of high biodiversity value. It shows that the area of the green wedge is a vital green infrastructure asset that provides position benefits to residents and flora and fauna alike

HBBC – Local Development Core Strategy Adopted December 2009

Preserve and enhance natural habitats and biodiversity - Despite popular natural attractions such as Burbage Common, Charnwood Forest, Ashby Canal and part of the National Forest, biodiversity is not particularly high overall. In fact, the East Midlands have one of the lowest percentages of woodland cover compared to the UK as a whole. There are 7 Sites of Special Scientific Interest in the borough, of these 60% are in an unfavourable condition and are continuing to decline. There are also numerous local wildlife sites/Sites of Importance for Nature Conservation. There is a strong need to provide protection and enhancement to these sites and the nature conservation sites, habitats and species listed in the Leicester, Leicestershire and Rutland Biodiversity Action Plan (BAP). The development occurring in Hinckley & Bosworth up until 2026 is likely to increase the pressure on the borough's landscapes and green spaces as well as presenting opportunities for enhancing and extending green infrastructure assets, linking and improving biodiversity within the borough.

3.38 Spatial Objectives

Spatial Objective 10: Natural Environment and Cultural Assets

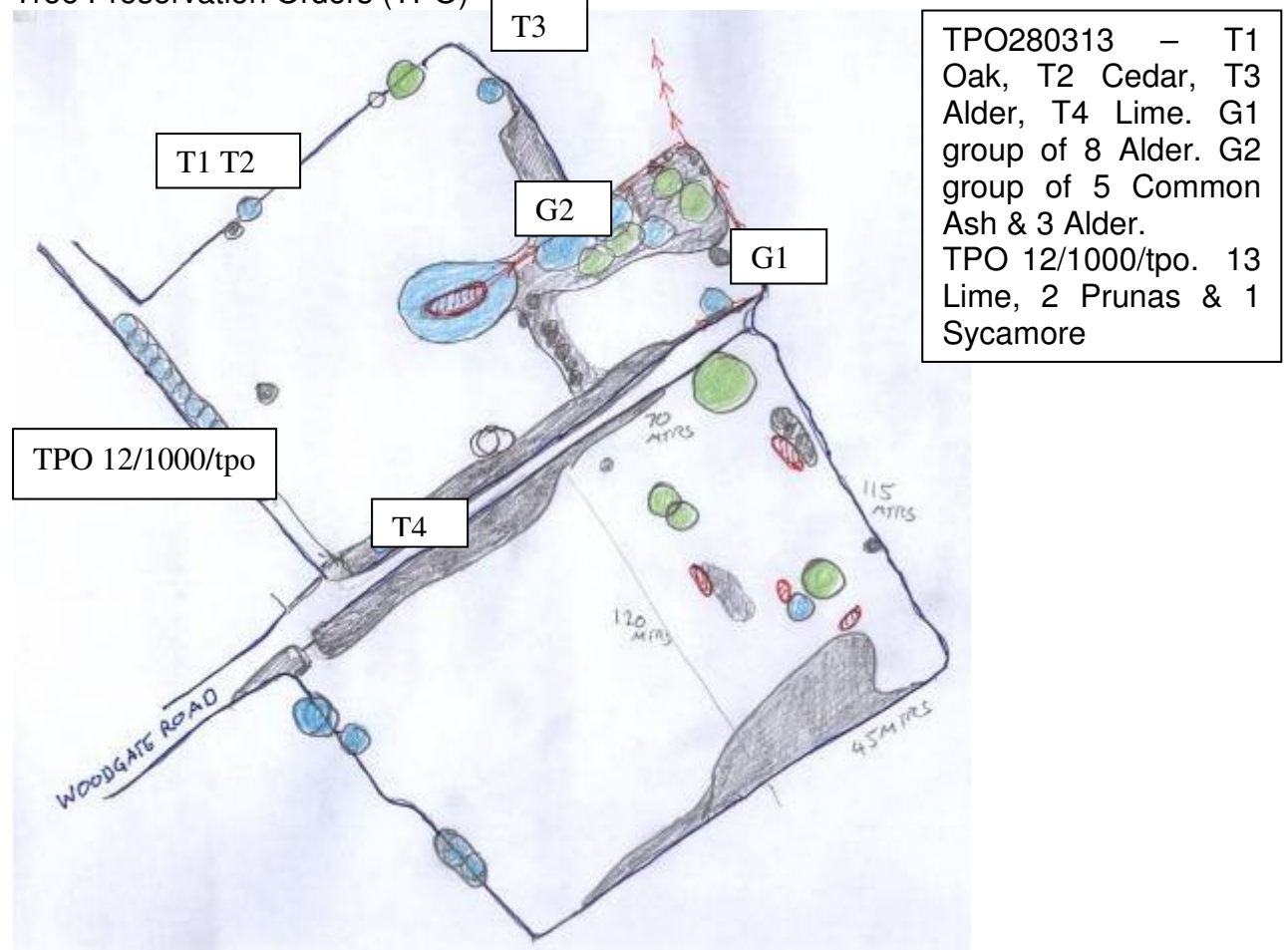
To deliver a linked network of green infrastructure, enhancing and protecting the borough's distinctive landscapes, woodlands, geology, archaeological heritage and biodiversity and encourage its understanding, appreciation, maintenance and development.

HABITATS.

Grassland approximately 10,250 square meters, Broadleaf Woodland – Wetland approximately 3,800 square meters, Wetland approximately 6,800 square meters, Paddock land approximately 8,000 square meters. Plus extensive hedgerows meeting LWS criteria.



Tree Preservation Orders (TPO)



Green, high quality life expectancy of at least 40 years, Blue, moderate quality life expectancy of at least 20 years, Grey, either stem diameter below 150mm or low quality life expectancy of at least 10 years. Red, ponds of greater than 6 meters around.

Plants & trees so far recorded/confirmed on the site

Horse Chestnut	Aesculus hippocastanum	Yorkshire Fog	Holcus lanatus *
Field Maple	Acer campestre	Creeping Soft-grass	Holcus mollis
Sycamore	Acer pseudoplatanus	Blue Bell	Hyacinthoides non-scripta(WC)
Yarrow	Achillea millefolium	Holly	Ilex aquifolium
Common Bent	Agrostis capillaris (ag)	Soft Rush	juncus effusus (wg)
Common Bugle	Ajuga reptans	Hard Rush	Juncus inflexus (wg)
Garlic Mustard	Alliaria petiolata	Meadow Vetchling	Lathyrus pratensis (mg)
Common Alder	Alnus glutinosa	Ox-eye daisy	Leucanthemum vulgare (mg)
Wild Marogold	Angelica sylvestris (wg)	Perennial Rye-grass	Lolium perenne *
Sweet Vernal-grass	Anthoxanthum odoratum *	Common Bird's-foot-trefoil	Lotus comiculatus * (mg)
False Oat-grass	Arrhenatherum elatius	Greater bird's-foot trefoil	Lotus pedunculatus (wg)
Silver Birch	Betula pendula	Field Wood-rush	Luzula campestris (mg)
Birch	Betula sp.	Apple	Malus domestica
Betony	Betonica officinalis (mg)	Dog's Mercury	Mercurialis perennis
Hairy-brome	Bromopsis ramosa	Rest-harrow	Onions sp. (mg)
Rosebay Willowherb	Chamerion angustifolium	Ribwort Plantain	Plantago lanceolata
Hedge Bindweed	Calystegia sepium	Aspen	Populus tremula
Harebell	Campanula rotundifolia (mg)	Silverweed	Potentilla anserina
Cuckoo Flower	Cardamine pratensis *(wg)	Creeping Cinquefoil	Potentilla reptans
Green-ribbed Sedge	Carex binervis (mg)	Purple Plum	Prunus cerasifera Pissardii
Hairy Sedge	Carex hirta	Blackthorn	Prunus spinosa
Spiked Sedge	Carex spicata (mg)	English Oak	Quercus robur
Deodar cedar	Cedrus deodara	Meadow Buttercup	Ranunculus acris (mg)
Knapweed	Centaurea nigra (mg)	Creeping Buttercup	Ranunculus repens
Common Mouse-ear	Cerastium fontanum **	Dog Rose	Rosa canina
Rosebay Willowherb	Chamerion angustifolium	Rose	Rosa sp.
Enchanter's Nightshade	Circaea lutetiana	Rosemary	Rosmarinus officinalis
Creeping Thistle	Cirsium arvense	Bramble	Rubus fruticosus agg.
Spear Thistle	Cirsium vulgare	Common Sorrel	Rumex acetosa (mg)
Cotoneaster	Cotonaster frigidus	Broad-leaved Dock	Rumex obtusifolius
Hazel	Corylus avellana	Goat Willow	Salix caprea ssp capera
Hawthorn	Crataegus monogyna	Crack Willow	Salix caprea
Smooth Hawk's-beard	Crepis capillaris	Elder	Sambucus nigra
Crested Dog's-tail	Cynosurus cristatus *	Figwort	Scrophularis sp.
Broom	Cytisus sp.	Common Ragwort	Senecio jacobaea
Cock's-foot	Dactylis glomerata	Red Campion	Silene dioica
Broad Buckler-fern	Dryopteris deilata	White Campion	Silene latifolia
Male-fern	Dryopteris filix-mas	Rowan	Sorbus aucuparia
Greater Willowherb	Epilobium hirsutum	Lesser Stitchwort	Stellaria graminea
Marsh Horsetail	Equisetum palustre	Greater Stitchwort	Stellaria holostea
Horsetail	Equisetum	Comfrey	Symphytum sp.
Cider Gum	Eucalyptus gunni	Lime	Tilia sp.
Beech	Fagus sylvatica	Red Clover	Trifolium pratense (mg)
Red Fescue	Festuca rubra *	White Clover	Trifolium repens
Meadow sweet	Filipendula ulmaris (mg)	English Elm	Ulmus procera
Common Ash	Fraxinus excelsior	Common Nettle	Urtica dioica
Common Hemp-nettle	Galeopsis tetrahit	Germander Speedwell	Veronica chamaedrys
Cut-leaved Crane's-bill	Geranium dissectum	Guelder Rose	Viburnum opulus
Ground-ivy	Glechoma hederacea	Tufted Vtech	Vicia cracca
Hogweed	Heracleum sphondylium		

(ms) LWS List F Mesotrophic grasslands (wg) LWS List G Wet grasslands
 (ag) LWS List H Acid grasslands (WC) Wildlife and countryside Act 1981 Sch. 8
 * Lowland Meadow grassland species JNCC. ** UKBAP *** Wet woodland
 specialist habitat species JNCC.

LWS 1. Woodland – Centred SP44154 93763 approx. 3,800 sq meters

Dominated by Alder with the water table seasonally near or above the surface over 0.25 ha. See (cer), (aar) & photographic evidence.

The northern section approximately 3,800 square metres. Including mature Common Alder (*Alnus glutinosa*), 3 with girth ranging from 2.4-3 meters, Ash (*Alnus glutinosa*) approx. 3 meter girth and Horse Chestnut (*Aesculus hippocastanum*) several 18 meters tall. Lime (*Tilia* sp.), Birch (*Betula* sp.) Elm (*Ulmis* sp.), Sycamore (*Acer pseudoplatanus*), English Oak (*Quercus robur*), Silver Birch (*Betula pendula*), English Elm (*Ulmus procera*), Holly (*Ilex aquifolium*), Apple (*Malus domestica*), Elder (*Sambucus nigra*), Common Ash (*Fraxinus excelsior*), Cider Gum (*Eurcalyptus gunni*), Flowering Cherry (*Prunus* sp.), Deodar Cedar (*Cedrus deodara*), Goat Willow (*Salix caprea*), trees across the site.



View from south of site, Common Alder (*Alnus glutinosa*) BS5837:2012 category A. Grid reference SP4419793772.



TPO Common Lime SP44099 93670



Common Alders in Wetland BS 5837:2012 overall condition 'Good' category A, south western area of site. SP4419193679

LWS 2. Hedgerows

At least 4 hedgerows meet the LWS criteria. Hedgerows B & C within 15 meters of each other either side of path/cartway off Woodgate Road from west to east 6 species from list A1. Field maple, Hawthorn, Ash, Holly, Elder, English Elm (cer & aar)). Additionally from list A2 a ditch is present for part of both hedges with dead wood/old layers along at least 10% they are parallel within 15 meters of each other.



A. 'Dog Leg' Hedgerow to North East of site. B & C parallel hedgerows through centre and D along the southern section.



C. Hedges alongside path/cartway looking from east to west.

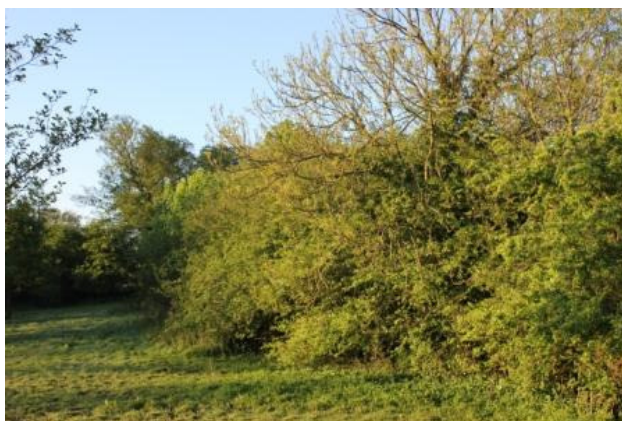


B. Opposite hedge within 15 meters.



D. Southern boundary of site hedgerow meets primary criteria with Blackthorn, English Elm, Holly, Hawthorn, Elder and Field Maple present.

A. 'Dog Leg' Hedgerow to North East contains Alder, Ash, Blackthorn, Hawthorn, Rose. Plus list A2 features of dead wood/old layers over at least 10% plus stream.



Dry ditch running through centre of upper section of North Eastern hedgerow A.



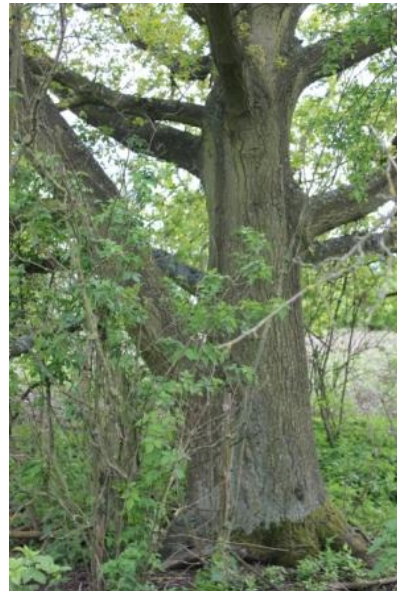
Flowing streams running along lower half of Hedgerow A forming a natural boundary to the LWS.

LWS 3. Mature trees. At least 3 examples

Ash tree T28 located at approximately SP44118 93755 next to main Pond, girth in excess of 3 meters.



Twin-stemmed tree English Oak T10
SP44204 93717. 1 meter above
ground 64cm dia 2.01 meters girth,
37cm dia 1.16 meters girth.



Twin-stemmed English Oak T14 SP 44236 93656. 1.5 meters above ground
45cm dia 1.42 meters girth, 62 cm dia 1.95 meters girth.

Other features. Many trees through out the site have dead branches visible rot hollows or bracket fungi. Below viewable from southern side.



Left evidence of woodpecker feeding on dead wood SP44198 93745. Below Common Alder (*Alnus glutinosa*) stem dia 1050 'may be considered a veteran specimen' (cer) . SP 44106 93819



LWS 8. Grasslands Semi-improved neutral grassland (JNCC)
Centred around SP4410693787 over 1 hectare (approx.12,000 sq meters)



LWS Mesotrophic or neutral grassland. Primary criteria (list F) so far recorded, *Betonica officinalis*, *Carex binervis* (cer), *Carex spicata*, *Campanula rotundifolia*, *Centaurea nigra*, *Filipendula ulmaris*, *Lathyrus pratensis* (cer), *Leucanthemum vulgare*, *Lotus corniculatus* (cer), *Luzula campestris* (cer), *Ranunculus acris* (cer), *Rumex acetosa* (cer) and *Trifolium pratense* (cer).

Mixed Grassland. In addition to the above 13 grass species from list G *Angelica sylvestris*, *Cardamine partensis*, *Juncus effuses* (cer) *Juncus inflexus* (cer), *Lotus pedunculatus* and from List H *Agrostis capillaries* (cer).

Secondary criteria, the site is in excess of 2,500 sq meters having over 8 species of grassland plant from lists F, G, H and J.



LWS 9. Wetlands.

Broad-leaved Woodland/Wet Woodland are listed as priority habitats in the UK Biodiversity Action Plan (UKBAP) and (LLRBAP).

Wetland habitat Grid reference SP4419893764



Southern part of the site is Wetland and bog. Over 6,800 sq meters Common Alder (*Alnus glutinosa*), Common Ash (*Fraxinus excelsior*), Dog's Mercury (*Mercurialis perennis*), Common Nettle (*Urtica dioica*), Field Maple (*Acer campestre*). All UKBAP listed as Wetland habitat plants



9.3 Standing water bodies, swamps, fens and ditches.

Primary criteria. A recorded flush fed by natural spring Pond has been shown on maps continually since 1889. Located within a wooded area at SP4412193749



Secondary criteria, besides main pond several flush fed by natural spring appear across the south western area.



Red Data Book Species Criteria

Breeding bird assemblages. From the over 60 species recorded those which appear on various notable lists.

Woodgate Site	SP441936			LROS (1-4)			RSPB	
	Scientific name		LRWT	Breeding,	UK BAP		Conservation	
RegularSighting		EB	LWS pts	Passage,	Concern	Concern	Concern3 list	
			Breed Assemb.	Summer,	Int.Level	Various	Red	Amber
				Winter				
Black cap	<i>Sylvia atricapilla</i>	ON	2	SB6; W4				
Blackbird	<i>Turdus merula</i>	FL	1					
Black-headed gull	<i>Larus ridibundus</i>	F		W7; B4				Yes
Blue Tit	<i>Parus caeruleus</i>	FL	1					
Bullfinch	<i>Pyrrhula pyrrhula</i>	T	2		Yes			Yes
Buzzard	<i>Buteo buteo</i>	F		BP4-5				
Carrion Crow	<i>Corvus corone cor.</i>	T	2					
Chaffinch	<i>Fringilla coelebs</i>	N	1	SB6; W3-4				
Chiffchaff	<i>Phylloscopus collybita</i>	N	2					
Coal Tit	<i>Parus ater</i>	H	2					
Common Whitethroat	<i>Sylvia communis</i>	D	2					Yes
Cuckoo	<i>Cuculus canorus</i>	H	3			Yes	Yes	
Dunnock	<i>Prunella modularis</i>	UN	1		Yes		Yes	
Feildfare	<i>Turdus Pilaris</i>	M		W6; S2				
Garden Warbler	<i>Sylvia borin</i>	FL	2					
Goldcrest	<i>Regulus regulus</i>	H	2					Yes
Goldfinch	<i>Carduelis carduelis</i>	S	2					
Great Tit	<i>Parus major</i>	FL	1					
Green Woodpecker	<i>Picus Viridis</i>	FF	3					Yes
Greenfinch	<i>Carduelis chloris</i>	T	2					
Grey Partridge	<i>Perdix perdix</i>	P		B4		Yes		
Herring Gull	<i>Larus argentatus</i>	F		W6; P3-4				
House Martin	<i>Delichon dasypus</i>	F						Yes
House Sparrow	<i>Passer domesticus</i>	P				Yes	Yes	
Jackdaw	<i>Corvus monedula</i>	B	2					
Jay	<i>Garrulus glandarius</i>	T	2					
Kestrel	<i>Falco tinnunculus</i>	F						Yes
Less Spotted W'dpk.	<i>Dendrocopos minor</i>	H	4	B4	Yes		Yes	
Linnet	<i>Acanthis cannabina</i>	S	2		Yes		Yes	
Long-tailed Tit	<i>Aegithalos caudatus</i>	FL	2					
Magpie	<i>Pica pica</i>	FL	2					
Mallard	<i>Anas platyrhynchos</i>	F						Yes
Marsh Tit	<i>Parus palustris</i>	H	2			Yes	Yes	
Mistle Thrush	<i>Turdus viscivorus</i>	H	2					Yes
Pheasant	<i>Phasianus colchicus</i>	UN	2					
Redwing	<i>Turdus ilacus</i>	F					Yes	
Robin	<i>Erithacus rubecula</i>	ON	1					
Rook	<i>Corvus frugilegus</i>	H	1					
Snipe	<i>Gallinago gallinago</i>	H						Yes
Song Thrush	<i>Turdus philomelos</i>	FF	2		Yes		Yes	
Sparrowhawk	<i>Accipiter nisus</i>	H	2					
Spotted Flycatcher	<i>Muscicapa striata</i>	T	3	SB4		Yes	Yes	
Starling	<i>Sturnus vulgaris</i>	FF	1			Yes	Yes	

Stock dove	Columba oenas	F	2					
Swallow	Hirunda rustica	F						Yes
Swift	Apus apus	F						Yes
Tawny Owl	Strix aluco	T	2					
Tree Sparrow	Passer montanus	P	3			Yes	Yes	
Treecreeper	Certhia familiaris	H	2					Yes
Turtle Dove	Streptopelia turtur	F	4	SB4		Yes		Yes
Willow Tit	Parus montanus	H	2		Yes		Yes	
Willow Warbler	Phylloscopus trochilus	FF	1					Yes
Wood Warbler	Phylloscopus sibilatrix	H	5	P3; B2 3obs		Yes	Yes	
Woodpigeon	Columba palumbus	FL	1					
Wren	Troglodytes trog.	NY	1					
Yellow Hammer	Emberiza citrinella	H	2			Yes	Yes	

* EB, evidence of breeding using the BTO 'Breeding evidence' criteria.

<http://www.bto.org/volunteer-surveys/birdatlas/taking-part/breeding-evidence>

Possible breeder = 29 LWS pts. Probable & Confirmed breeding = 52 LWS pts



Left. Green Woodpecker (Picus viridis) RSPB Amber listed 'Birds of conservation concern 3. SP44055 93756 June 2012. Breeding pair regularly seen at this location.

Below. Wood Warbler (Phylloscopus sibilatrix) 16.30 26th May 2013 SP SP4408193655. Foraging for insects nesting close by. BTO 'rare bird' sighting awaiting confirmation.





Sparrow Hawk (*Accipiter nisus*) SP 4405593756
(garden fence 7 The Coppice Burbage)
November 2011

Tawny Owl (*Strix Aluco*)
SP4410893745. 23-May-2013 19.30. Observed
hunting over Grassland.



Blackcap (*Sylvia atricapilla*)
male singing 27th May 2013
06.30. Territorial behaviour
SP 4419693739

Bullfinch male 06-
May-2013 Territorial
behaviour.
SP4418093732



Reptiles

Grass Snakes (*natrix natrix*) in habit the site. Photo taken 02-10-12
SP4422293481 pond within garden less than 100 meters from southern edge
of site. Appendix A for sighting evidence.



Grass snakes have been
frequently seen in and around
the site. Below within garden 7
The Coppice SP 4405593756
July 2011.



Conservation – recent declines in central England have led to the grass snake becoming a UK BAP species. It is partially protected under Schedule 5 of the Wildlife and Countryside Act 1981 (from killing, injury and sale only).

Bats

Common Pipistrelles (*Pipistrellus pipistrellus*) are frequently seen both commuting and feeding in and around the site. Many confirmed sightings over many years, below June 2013 over the Grassland area, see Appendix A.



COMMUNITY CRITERIA

1. Accessibility and usage H.

A public footpath path U14 and cartway cuts across the site from Woodgate Road leading to Burbage Woods. This path as recently been improved with a hard-core base. Most of the site is viewable especially during the winter time. The southern part of the site is viewable from a well walked field used by local residents, dog walkers and nature enthusiasts. Paddock area within southern section of site used for horse riding. There is evidence of play activity within the south eastern area of the site with tree dens and rope swings.



2. Education and awareness

This site can be considered as the 'start' of the Burbage Woods & Common wildlife habitat being easily accessible from Burbage Road Burbage. Within half km of Hastings High School and just over one km from Burbage infants & junior school. Currently irregularly used for core curriculum. However, an enthusiastic response and support from the 3 local schools (Appendix B). Richard Harris Headteacher Burbage Juniors '*...our children must have opportunities to see, smell, taste and understand its many wonders. To have such a facility on our doorstep would....be of immense benefit to our pupils*'. Karen Allen Headteacher Burbage Infants '*this project would provide an environment within walkable distance for our children, and we could regularly make use of it*'. Following meetings with Nick Goforth Headteacher of Hastings High school a dialogue has been established for education and development . It was particularly noted that this LWS would be within easy walking distance (Appendix B).

3. Sense of ownership.

The 'Ecology' group of local residents used to assist with this evidence report in conjunction with other agencies BPC, BTO, LRWT, RSPB and local schools would actively and voluntarily assist in the care and management of the wildlife and habitat of the site. Following application of LWS status further dialogue will be attempted with the land owners to help develop and improve the site. BPC acting in conjunction with LRWT would look to the formation of a democratic 'Woodgate LWS' committee to help apply for funds, raise sponsorship and donations to help improve the LWS facilities, signage and accessibility.

4. History. There is evidence of past management by the Countryside Commission



Located at SP4416693716 within hedgerow B left hand side of path/cartway west to east. Restoration of Hedgerow under 10 year agreement with Countryside Commission

Rare Plants - Listed within 'The Flora of Leicestershire and Rutland: Checklist and Rare Plant Register.

Blue Bell (*Hyacinthoides non-scripta*) – Wildlife and Countryside Act Sch 8.



Extensive areas of Bluebells located within Woodland area

Mammals

Extensive Rabbit Warrens through out the Grassland area, frequently predated on by Foxes. The habitat is noted for being well suited to Badgers (ce). Photos April/May 2013
SP44058 93757



Fox predating on Rabbits within site



Muntjac (*Muntiacus reevesi*).
Regularly seen on the site.
Often heard 'barking'

(library pic.)

CONCLUSION

The only form of protection afforded to Local Wildlife Sites has been through the planning system. On 27 March 2012 the Government launched its National Planning Policy Framework for England, a 50 page consolidation of policy, down from more than 1,000 pages. This new framework retains protection for Local Wildlife Sites which are clearly recognised in the framework as locally designated sites. The policy specifically relating to locally designated sites is found in several paragraphs which provide the direction for local authorities to identify, map and protect these sites through local plans. The new policy also requires protection of Local Wildlife Sites to recognise the importance and the contribution that they make to wider ecological networks, as stated in the Government's own Natural Environment White Paper. The Wildlife Trusts will work to ensure local authorities are aware of these changes and considering Local Wildlife Sites in their local plans.

This site is an important wildlife oasis which needs protecting from development. With a diverse mosaic of habitat supporting a rich interesting flora & fauna. Additionally acting as great local amenity leading down to current SSSI site Burbage Woods & Burbage Common.

APPENDIX A. – Local residence evidence

Email 7th June 2013 (Evidence of historical play and aquatic life in ponds on the site)

I have lived local to the LWS application site for 40 years, as a young boy of 5-10 years of age I used to visit the ponds looking for wildlife. While out "ponding" we found Frogs and Frog Spawn in large numbers / Newts / Toads / Stickle backs / Pond skaters and Dragon flies. The pond and surrounding area appeared to be fed by natural springs from the west and filtered out into marsh land to the north.

John Hayes
33 Sapcote Road
Hinckley

Email 16th May 2013 (Evidence of Grass snakes, frogs and bats).

Just to let you know that we have seen at least four grass snakes towards the bottom of our garden (also seen by our builder!) Susan and Stuart also had snakes visit their pond before it was filled in. When we had a pond, we had literally hundreds of frogs – our garden seemed to be a breeding ground! We have also seen bats in the evening. The sighting of foxes and rabbits is a normal occurrence in both our garden and the paddock.

Catharine Brooks
9 The Coppice
Burbage
LE10 2TF

Email 16th May 2013 (Evidence of Hedgehogs, mice, Grass snake & Bats)

In response to your request for information regarding wildlife, we have lived in Woodgate Road for over 13 years and during that time have seen a wide range of wildlife both in our garden and in the fields below our garden. We have made many sightings of the more common species i.e. hedgehogs, foxes, rabbits etc but have on many occasions seen field mice, bull finches and the colony of bats that flies in the twilight has increased over the years so we assume there is a thriving roost somewhere nearby. We have, more rarely, seen a green woodpecker in our trees and last summer had a grass snake slithering through the bottom of our garden. Sadly we didn't have a camera handy for any of these rarer sightings but have plenty of the foxes and rabbits.

Vivienne Mangiante
2 Woodgate Road
Burbage
Leicestershire

Email 14th May 2013 (Evidence of Bats and Snake)

I have seen in the field behind our house - foxes, rabbits, and a deer. In our garden we have seen - bats flying around which appear to have come from the trees in the field and are heading towards Elm Tree Drive - summer evenings a snake, which certainly wasn't a grass snake! - last Spring

Mike Stansfield
5 The Coppice
Burbage Leics LE10 2TF

Email 14th May (Evidence of Snakes, Bats and Newts)

We have Bats that visit the lake at dusk to drink and catch insects, also for the last ten or more years we have had Grass Snakes breeding in the 'reed' compost heap along with Hedgehogs. The lake and ponds are home to a variety of aquatic life including Frogs, Toads, Newts, Dragonflies and Damselflies etc. We also see Foxes, Rabbits and the occasional Hare and Deer.

Irene and Peter Faulkner
45a Sapcote Road
BurbageHinckley
Leics LE10 2AS

Email 13th May 2013 (Evidence of Bats)

We definitely have Bats visiting our garden but to date I haven't been quite able to pin point the roost and where they come from. When the weather was warming up they were just starting to become more active. I will keep my eyes peeled.

Iain Quinn
Beech House
Woodgate Road
Burbage
LE10 2UF

Email 13th May 2013 (Evidence of Grass snake)

Report	from	Justin	Inman
15		Woodgate	Road
Burbage			
LE10			3BY

I can definitely confirm myself and Zeana seeing a snake by the mound at the end of the drive. Assume it was a grass snake.

Email 14th May 2013 (Evidence of birds and Grass Snake photos).

Please look at the link below. There are some photos of birds and animals taken in my back garden or across the field at the back of us (front of you). The grass snake may be of interest to you.

Stuart Spraggett
7 The Coppice

Email 29th April 2013 (Evidence of rare birds)

Kingfisher, Snipe (which I have been told are nesting in the field at the end of Woodgate Road), Warblers (not sure which). Green Woodpecker, Lesser Spotted Woodpecker, Long Tailed Tit, Sparrow Hawk, Chaffinch, Mute Swan, Moorhen, Coot, Grass Snakes (been nesting in garden for over ten years) Bats, Foxes

Irene
45a Sapcote Road
Burbage Hinckley
Leics LE10 2AS

Report (Evidence of bird-assemblages, Bats and Muntjac deer)
Detailed 'Field Notes' – Available on request. BTO – Bird Track records
logged.

I have used Burbage Woods & Common for Bird study for over 20 years including the Woodgate Road proposed site. Since moving to Burbage in 1996 I have used Woodgate Road on a regular basis for bird watching and then moved to Woodgate Road in 2005. Besides my 'field notes' I have also logged observations from 2012 on BTO Birdtrack. Bats are regularly seen feeding over the Grassland and Lime trees in front of my house and appear to come from the Wooded area within the centre of the site. The distinctive screeching bark from Muntjac deer can regularly been heard early in the morning.

Philip Crowfoot
11 Woodgate Road
Burbage
LE10 2UF

(RSPB member 17594336 over 25 years, BTO Bird-track contributor)

Report of sightings made at the 'Nature Reserve' either side of the Public Footpath at the end of Woodgate Road in Burbage, on Wednesday 5th June 2013, between 14.30 and 17.00 hours. The weather was very cool, windy and overcast. Activity was greatest from 15.30 onwards.

Most activity was centred in the clearing (? near the pond) where there is a mixture of bushy shrubs, mature trees and ground cover vegetation.

At the base of a shrubby bush where some old brambles were overgrown with grasses and nettles from this year, a pair of Black caps were very active looking as if they had a nest hidden in the area. The male occasionally taking time to perch and sing.

In the same area a male Chiffchaff was perching high and exposed to proclaim his presence. Also showing well were male and female Bullfinches, again the female kept disappearing into the undergrowth as if she had a nest site to protect.

On the opposite side of the track in the trees at the end of the paddock, a Song Thrush was singing for most of the afternoon. Flying backwards and forwards across the track (from one hedge to the other) were several Dunnocks, Robin, Wren, Chaffinch and Blackbird.

A Greenfinch was singing mostly in the trees across the first field to the right, but spent some time in the tall trees in the copse.

Also seen were Wood Pigeons, Jackdaws, Magpie and Rabbits.

Jennifer Foxon MBE ('Services to Science' - for 40 years worked in the Department of Genetics at Leicester University as a technician).

BSc in Ecology
Member of LRWT, RSBP

APPENDIX B. – Correspondence

Burbage CofE Infant School

Laying the foundations for a lifetime of learning

Headteacher: Karen Allen, BEd Hons
Deputy Headteacher: Caroline Ife

Grove Road
Burbage
Leicestershire
LE10 2AE



Tel: 01455 239391
Fax: 01455 618467
Email: office@burbage-inf.leics.sch.uk
Website: www.burbage-inf.leics.sch.uk

17th June 2013

Julie Perrin
Burbage Parish Council
Millennium Hall
Britannia Road
Burbage
Leics
LE10 2UF

Dear Julie,

I am writing in support of the establishment of a Local Wildlife Site (LWS) on land off Woodland Road / The Coppice in Burbage.

Environmental work is a key part of the curriculum at Burbage C of E Infant School, and fits closely with one of our five school values, "care". We believe that children in the age range we teach have an instinctive fascination for nature and the world around us, and as such this is something we are keen to nurture by enabling them to encounter a rich range of natural environments. Much of this is provided within our school grounds; we currently have raised beds for gardening, a willow structure of which all the children have contributed to the design and development, a wildlife garden, and a large number of mature trees which provide habitats for a wide range of birds and other wildlife. We also offer as many opportunities as we can for the children to visit other environments, and this includes trips to Beaumanor Hall and the Botanic Gardens in Leicester. However, these opportunities are limited by the cost of coach travel, and although Burbage Woods and Common could provide a beautiful and relatively local opportunity, for our many little legs it is just a bit too far to walk. However, this project would provide an environment within walkable distance for our children, and we could regularly make use of it as we do many other places within the village. The wide variety of the habitats it contains, including woodland, hedgerows, grass and wetland would enable us to introduce the children to a rich diversity of habitats within their own community.

I hope this information is of use to you. If anyone from the Parish Council would like to visit the school to find out more about the way we work with our children on this theme, please do not hesitate to contact me at the school.

Thank you for your time in considering this application.

Karen Allen
Headteacher
Burbage CofE Infant School





Burbage Junior School

Grove Road, Burbage, Hinckley, Leicestershire LE10 2AD

Headteacher

Mr. R. Harris B.Ed (Hons). M.A

Telephone

01455 630970

Fax

01455 630979

12th June 2013

Julie Perrin
Burbage Parish Council
Millennium Hall
Britannia Road
Burbage
Leics
LE10 2UF

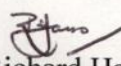
Dear Julie

I write to express my interest and support on behalf of Burbage Junior School for the establishment of a Local Wildlife Site (LWS) on land off Woodgate Road/The Coppice here in Burbage. I am personally aware of the area as one of natural beauty and interest and well worth protecting but from a school perspective it holds many possibilities.

Burbage Juniors has a proud tradition for its Eco work. We have been awarded Green Flag status three times. Green Flag is the very highest award which has to be re-assessed every two years. Our grounds here are splendid and of natural interest but restrictive. We have always looked outwards to find places of interest to visit to help develop children's educational thinking and understanding. These have included Burbage Common and woods (a considerable walk from our school), Bradgate Park (a coach trip) and Severn Trent Water site at Cropston (no longer available to school groups). In the current economic climate, any visit requiring coach travel is expensive and cannot be done frequently enough to have impact. The joy of this proposed site is that it is within short walking distance of our school and would enable regular visits to gain first hand experiences.

The natural world is an area of education that is often undervalued and should be higher on the national agenda than it currently is. Our children **must** have opportunities to see, smell, taste and understand its many wonders. To have such a facility on our doorstep would provide local children with a rich resource of woodland, hedgerows, grass and wetland and all the species these habitats attract. It would be of immense benefit to our pupils.

Yours sincerely


Richard Harris
Headteacher

St Catherine's Close, Burbage,
Hinckley, Leicestershire, LE10 2QE

T: 01455 239414

F: 01455 631629

E: hastings@hastings.leics.sch.uk

W: www.hastings.leics.sch.uk

HASTINGS HIGH SCHOOL

"The Best for Every Child"



Headteacher: **Nick Goforth** Deputy Headteacher: **Peter Clowes**

Julie Perrin (Principle officer)
Burbage Parish Council
Millennium Hall
Britannia Road
Burbage
LE10 2HF

June 2013

Dear Julie

I would like to offer my support for the establishment of a Local Wildlife Site here in Burbage and can see significant educational benefits arising from this important development.

There are obvious links with our geography units of work but the site would also support our wider environmental enrichment curriculum. The close proximity to the school would allow our children to visit the area regularly both in lessons and in their own time. I could also envisage joint projects at the site linking local primary and secondary schools together.

I hope that the application will be successful and am happy to provide any further support that I can.

Yours sincerely

Nick Goforth

Headteacher

