

[>Topics](#) > [>Census](#) > [>2011 Census: Key Statistics](#) > [>Key Figures](#)

Area: Burbage Sketchley and Stretton (Ward)

Key Figures for 2011 Census: Key Statistics

[Map this data \(opens a new window\)](#)
[Print this table](#)
[Download
the table
.CSV format
under 1MB](#)
[Download this table](#)

Variable	Measure	Burbage Sketchley and Stretton	Hinckley and Bosworth (Non-Metropolitan District)	East Midlands
2011 Population: All Usual Residents (Persons, Mar11) ¹	Count	8,862	105,078	4,533,222 5
2011 Population: Males (Persons, Mar11) ¹	Count	4,313	51,700	2,234,493 2
2011 Population: Females (Persons, Mar11) ¹	Count	4,549	53,378	2,298,729 2
2011 Density (number of persons per hectare) (Persons, Mar11) ¹	Rate	9.6	3.5	2.9
All Households (Households, Mar11) ¹	Count	3,774	45,377	1,895,604 2
All households who owned their accommodation outright (Households, Mar11) ^{1,2}	%	44.3	37.2	32.8
All households who owned their accommodation with a mortgage or loan (Households, Mar11) ^{1,2}	%	43.2	39.6	34.5
Very Good Health (Persons, Mar11) ¹	%	48.8	46.3	45.3

Area Map



View

[Choose another table from the list](#)

Search within topics

Good Health (Persons, Mar11) ¹	%	36.0	35.8	35.1
Day-to-Day Activities Limited a Lot (Persons, Mar11) ¹	%	5.8	7.5	8.7
Economically Active; Employee; Full-Time (Persons, Mar11) ¹	%	43.0	42.6	38.8
Economically Active; Employee; Part-Time (Persons, Mar11) ¹	%	14.9	14.7	14.4
Economically Active; Self-Employed (Persons, Mar11) ¹	%	10.5	10.0	8.7
Economically Active; Unemployed (Persons, Mar11) ¹	%	2.1	3.1	4.2
People aged 16 and over with 5 or more GCSEs grade A-C, or equivalent (Persons, Mar11) ¹	%	15.1	16.1	15.6
People aged 16 and over with no formal qualifications (Persons, Mar11) ¹	%	20.4	24.4	24.7

Source: Office for Nation

1 National Statistics

- 2 The Census asked respondents to identify who their landlord is and the results reflect the responses they gave. In the past decade half of the local authorities in Wales have transferred the management of all their local authority housing stock to other social landlords. Individuals responding to the Census will report their understanding of their landlord and this may not reflect the actual management arrangements in all cases.



[About Neighbourhood Statistics](#) | [News](#) | [User Guide](#) | [FAQ](#) | [Glossary](#) | [Site Map](#)

© Crown Copyright | [Contact Us](#) | [Terms and Conditions](#) | [GOV.UK](#)

[>Topics](#) [>Census](#) [>2011 Census: Key Statistics](#) [>Tenure, 2011 \(KS402EW\)](#)
Area: Burbage Sketchley and Stretton (Ward)
Tenure, 2011 (KS402EW)
[Map this data \(opens a new window\)](#)
[Email me about data releases](#)

Period

Mar11 ▾

[Print this table](#)

 Download
the
complete
dataset
in
.CSV
format
under
1MB
[Download t](#)

Variable	Measure	Burbage Sketchley and Stretton	Hinckley and Bosworth (Non-Metropolitan District)	East Midlands	England
All Households (Households) ¹ ₂	Count	3,774	45,377	1,895,604	22
Owned; Owned Outright (Households) ¹ ₂	Count	1,672	16,859	621,224	6
Owned; Owned Outright (Households) ¹ ₂	%	44.3	37.2	32.8	
Owned; Owned with a Mortgage or Loan (Households) ¹ ₂	Count	1,632	17,967	653,441	7
Owned; Owned with a Mortgage or Loan (Households) ¹ ₂	%	43.2	39.6	34.5	
Shared Ownership (Part Owned and Part Rented) (Households) ¹ ₂	Count	10	267	12,744	
Shared Ownership (Part Owned and Part Rented) (Households) ¹ ₂	%	0.3	0.6	0.7	
Social Rented;					

Area Map

© Crown copyright and database rights 2014 Ordnance Survey 100019163



Area: Burbage Sketchley and Stretton (Ward)

View

Choose another table from the list

Advanced options

Compare your data further

Rented from Council (Local Authority) (Households) ¹ ₂	Count	41	3,238	192,049	2
Social Rented; Rented from Council (Local Authority) (Households) ¹ ₂	%	1.1	7.1	10.1	
Social Rented; Other (Households) ¹ ₂	Count	65	1,447	108,374	1
Social Rented; Other (Households) ¹ ₂	%	1.7	3.2	5.7	
Private Rented; Private Landlord or Letting Agency (Households) ¹ ₂	Count	293	4,657	257,017	3
Private Rented; Private Landlord or Letting Agency (Households) ¹ ₂	%	7.8	10.3	13.6	
Private Rented; Other (Households) ¹ ₂	Count	34	499	25,426	
Private Rented; Other (Households) ¹ ₂	%	0.9	1.1	1.3	
Living Rent Free (Households) ¹ ₂	Count	27	443	25,329	
Living Rent Free (Households) ¹ ₂	%	0.7	1.0	1.3	

Last Updated: 30 Jan
Source: Office for National

1 National Statistics

2 The Census asked respondents to identify who their landlord is and the results reflect the responses they gave. In the past decade half of the local authorities in Wales have transferred the management of all their local authority housing stock to other social landlords. Individuals responding to the Census will report their understanding of their landlord and this may not reflect the actual management arrangements in all cases.

[>Topics](#) > [>Census](#) > [2011 Census: Key Statistics](#) > [Car or Van Availability, 2011 \(KS404EW\)](#)
Area: Burbage Sketchley and Stretton (Ward)
Car or Van Availability, 2011 (KS404EW)
[Map this data \(opens a new window\)](#)
[Email me about data releases](#)

Period

Mar11 ▾

[Print this table](#)

 Download
the
complete
dataset
in
.CSV
format
under
1MB
[Download t](#)

Variable	Measure	Burbage Sketchley and Stretton	Hinckley and Bosworth (Non-Metropolitan District)	East Midlands	England
All Households (Households) ¹	Count	3,774	45,377	1,895,604	22
No Cars or Vans in Household (Households) ¹	Count	359	6,618	418,999	5
No Cars or Vans in Household (Households) ¹	%	9.5	14.6	22.1	
1 Car or Van in Household (Households) ¹	Count	1,490	18,943	805,212	9
1 Car or Van in Household (Households) ¹	%	39.5	41.7	42.5	
2 Cars or Vans in Household (Households) ¹	Count	1,455	15,137	519,487	5
2 Cars or Vans in Household (Households) ¹	%	38.6	33.4	27.4	
3 Cars or Vans in Household (Households) ¹	Count	362	3,458	113,338	1
3 Cars or Vans in Household (Households) ¹	%	9.6	7.6	6.0	

Area Map

© Crown copyright and database rights 2014 Ordnance Survey 100019153



Area: Burbage Sketchley and Stretton (Ward)

View
[Choose another table from the list](#)
Advanced options
[Compare your data further](#)

4 or More Cars or Vans in Household (Households) ¹	Count	108	1,221	38,568
4 or More Cars or Vans in Household (Households) ¹	%	2.9	2.7	2.0
All Cars or Vans in the Area (Vehicles) ¹	Count	5,955	65,022	2,356,539

Last Updated: 30 Jan
Source: Office for National

1 National Statistics



[About Neighbourhood Statistics](#) | [News](#) | [User Guide](#) | [FAQ](#) | [Glossary](#) | [Site Map](#)

© Crown Copyright | [Contact Us](#) | [Terms and Conditions](#) | [GOV.UK](#)

[>Topics](#) > [Census](#) > [2011 Census: Key Statistics](#) > [Industry, 2011 \(KS605EW\)](#)
Area: Burbage Sketchley and Stretton (Ward)
Industry, 2011 (KS605EW)
[Map this data \(opens a new window\)](#)
[Email me about data releases](#)

Period

Mar11 ▾

[Print this table](#)

 Download
the
complete
dataset
in
.CSV
format
under
1MB
[Download t](#)

Variable	Measure	Burbage Sketchley and Stretton	Hinckley and Bosworth (Non-Metropolitan District)	East Midlands
All Usual Residents Aged 16 to 74 in Employment (Persons) ¹	Count	4,622	53,774	2,146,541
A Agriculture, Forestry and Fishing (Persons) ¹	Count	21	529	25,011
A Agriculture, Forestry and Fishing (Persons) ¹	%	0.5	1.0	1.2
B Mining and Quarrying (Persons) ¹	Count	10	144	5,657
B Mining and Quarrying (Persons) ¹	%	0.2	0.3	0.3
C Manufacturing (Persons) ¹	Count	619	7,390	276,906
C Manufacturing (Persons) ¹	%	13.4	13.7	12.9
D Electricity, Gas, Steam and Air Conditioning Supply (Pollutant) ¹	Count	121	1,217	17,649
D Electricity, Gas, Steam and Air Conditioning Supply (Persons) ¹	%	2.6	2.3	0.8
E Water Supply; Sewerage, Waste				

Area Map

© Crown copyright and database rights 2014 Ordnance Survey 100019153



Area: Burbage Sketchley and Stretton (Ward)

View

Choose another table from the list

Advanced options

Compare your data further

Management and Remediation Activities (Persons) ¹	Count	34	410	16,229
E Water Supply; Sewerage, Waste Management and Remediation Activities (Persons) ¹	%	0.7	0.8	0.8
F Construction (Persons) ¹	Count	350	4,465	165,967
F Construction (Persons) ¹	%	7.6	8.3	7.7
G Wholesale and Retail Trade; Repair of Motor Vehicles and Motor Cycles (Persons) ¹	Count	813	10,032	381,246
G Wholesale and Retail Trade; Repair of Motor Vehicles and Motor Cycles (Persons) ¹	%	17.6	18.7	17.8
H Transport and Storage (Persons) ¹	Count	226	2,991	112,275
H Transport and Storage (Persons) ¹	%	4.9	5.6	5.2
I Accommodation and Food Service Activities (Persons) ¹	Count	162	2,281	109,891
I Accommodation and Food Service Activities (Persons) ¹	%	3.5	4.2	5.1
J Information and Communication (Persons) ¹	Count	129	1,390	56,664
J Information and Communication (Persons) ¹	%	2.8	2.6	2.6
K Financial and Insurance Activities (Persons) ¹	Count	191	1,568	54,384
K Financial and Insurance Activities (Persons) ¹	%	4.1	2.9	2.5
L Real Estate Activities (Persons) ¹	Count	58	523	24,513
L Real Estate Activities (Persons) ¹	%	1.3	1.0	1.1
M Professional, Scientific and Technical	Count	292	2,906	106,604

Activities (Persons) ¹				
M Professional, Scientific and Technical Activities (Persons) ¹	%	6.3	5.4	5.0
N Administrative and Support Service Activities (Persons) ¹	Count	184	2,128	96,191
N Administrative and Support Service Activities (Persons) ¹	%	4.0	4.0	4.5
O Public Administration and Defence; Compulsory Social Security (Persons) ¹	Count	207	2,561	119,407
O Public Administration and Defence; Compulsory Social Security (Persons) ¹	%	4.5	4.8	5.6
P Education (Persons) ¹	Count	561	5,294	213,375
P Education (Persons) ¹	%	12.1	9.8	9.9
Q Human Health and Social Work Activities (Persons) ¹	Count	469	5,730	269,593
Q Human Health and Social Work Activities (Persons) ¹	%	10.1	10.7	12.6
R, S, T, U Other (Persons) ¹	Count	175	2,215	94,979
R, S, T, U Other (Persons) ¹	%	3.8	4.1	4.4

Last Updated: 30 Ja
Source: Office for Nation

1 National Statistics

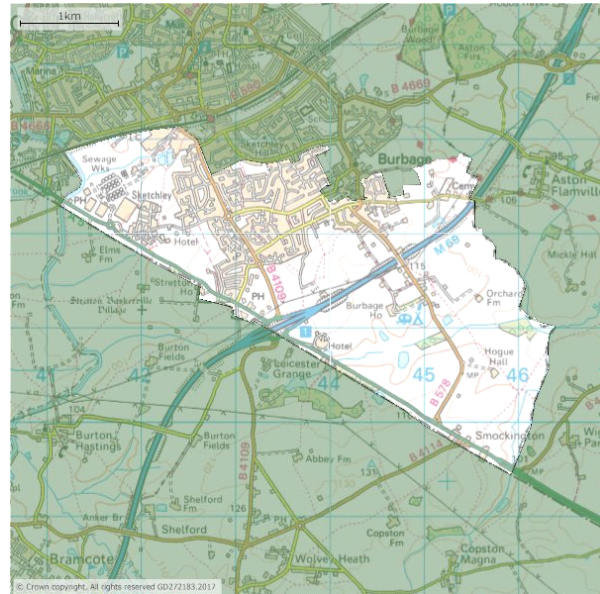


[About Neighbourhood Statistics](#) | [News](#) | [User Guide](#) | [FAQ](#) | [Glossary](#) | [Site Map](#)

© Crown Copyright | [Contact Us](#) | [Terms and Conditions](#) | [GOV.UK](#)

2011 Ward Labour Market Profile E36004094 : Burbage Sketchley And Stretton

This summary gives an overview of the labour market within E36004094 : Burbage Sketchley and Stretton 2011 ward which is in the Hinckley and Bosworth local authority.



Resident Population

Population aged 16-64 (2013)

	E36004094 : Burbage Sketchley And Stretton (Numbers)	Hinckley And Bosworth (Numbers)	England And Wales (Numbers)
All persons	5,412	67,322	36,777,560
Males	2,621	33,334	18,373,644
Females	2,791	33,988	18,403,916

Source: ONS mid-year population estimates

Note: Percentages are based on total population.

Labour Supply

Employment and unemployment (2011)

	E36004094 : Burbage Sketchley And Stretton (Numbers)	E36004094 : Burbage Sketchley And Stretton (%)	Hinckley And Bosworth (%)	England And Wales (%)

2011 Ward profile for E36004094 : Burbage Sketchley and Stretton

All People

Economically Active	4,650	82.8	81.8	76.8
In Employment	4,485	79.8	77.7	71.0
Employees	3,824	68.1	66.9	60.6
Self Employed	661	11.8	10.8	10.4
Unemployed	165	3.5	5.0	7.6

Males

Economically Active	2,428	87.4	87.1	82.0
In Employment	2,323	83.7	82.3	75.1
Employees	1,873	67.4	67.0	60.5
Self Employed	450	16.2	15.3	14.7
Unemployed	105	4.3	5.5	8.4

Females

Economically Active	2,222	78.2	76.6	71.7
In Employment	2,162	76.1	73.2	66.9
Employees	1,951	68.7	66.8	60.7
Self Employed	211	7.4	6.5	6.2
Unemployed	60	2.7	4.4	6.8

Source: 2011 Census (Table DC6107EW - Economic Activity by sex by age)

Note: Percentages are based on population aged 16-64, except unemployed which is based on economically active.

Economic inactivity (2011)

	E36004094 : Burbage Sketchley And Stretton (Numbers)	E36004094 : Burbage Sketchley And Stretton (%)	Hinckley And Bosworth (%)	England And Wales (%)
All People				
Economically Inactive	967	17.2	18.2	23.2
Retired	433	7.7	6.2	4.9
Student	211	3.8	3.9	6.6
Looking After Home Or Family	177	3.2	3.7	4.9
Long-Term Sick Or Disabled	97	1.7	3.2	4.6
Other	49	0.9	1.3	2.3
Males				
Economically Inactive	349	12.6	12.9	18.0
Retired	155	5.6	4.2	3.5
Student	106	3.8	3.8	6.7
Looking After Home Or Family	21	0.8	0.7	0.9
Long-Term Sick Or Disabled	44	1.6	3.2	4.8
Other	23	0.8	1.0	2.1
Females				
Economically Inactive	618	21.8	23.4	28.3
Retired	278	9.8	8.2	6.3
Student	105	3.7	3.9	6.4
Looking After Home Or Family	156	5.5	6.7	8.8
Long-Term Sick Or Disabled	53	1.9	3.2	4.3
Other	26	0.9	1.5	2.5

2011 Ward profile for E36004094 : Burbage Sketchley and Stretton

Source: 2011 Census (Table DC6107EW - Economic Activity by sex by age)

Note: Percentages are based on population aged 16-64.

Full time/part time working (2011)

	E36004094 : Burbage Sketchley And Stretton (Numbers)	E36004094 : Burbage Sketchley And Stretton (%)	Hinckley And Bosworth (%)	England And Wales (%)
All People				
Full Time In Employment	3,328	71.8	72.0	70.7
Part Time In Employment	1,307	28.2	28.0	29.3
Males				
Full Time In Employment	2,145	89.0	87.9	84.1
Part Time In Employment	265	11.0	12.1	15.9
Females				
Full Time In Employment	1,183	53.2	54.2	55.7
Part Time In Employment	1,042	46.8	45.8	44.3

Source: 2011 Census (Table DC6107EW - Economic Activity by sex by age)

Note: Figures are for persons aged 16 and over and percentages are based on all persons in employment.

Employment by occupation (2011)

	E36004094 : Burbage Sketchley And Stretton (Numbers)	E36004094 : Burbage Sketchley And Stretton (%)	Hinckley And Bosworth (%)	England And Wales (%)
1 Managers And Senior Officials	686	14.8	11.9	10.8
2 Professional	871	18.8	15.4	17.4
3 Associate Professional & Technical	649	14.0	12.1	12.7
4 Administrative & Secretarial	575	12.4	12.2	11.4
5 Skilled Trades	452	9.8	12.7	11.5
6 Personal Services	385	8.3	8.9	9.4
7 Sales And Customer Services	295	6.4	7.2	8.4
8 Process Plant And Machine Operatives	317	6.8	8.4	7.2
9 Elementary Occupations	405	8.7	11.2	11.2

Source: 2011 Census (Table DC6112EW - Occupation by sex by age)

Note: Figures are for persons aged 16 and over by Soc 2010 major groups. Percentages are based on all persons in employment.

Qualifications (2011)

	E36004094 : Burbage Sketchley And Stretton (Numbers)	E36004094 : Burbage Sketchley And Stretton (%)	Hinckley And Bosworth (%)	England And Wales (%)
All People				
Level 4 Qualifications And Above	1,930	34.4	26.9	29.7
Level 3 Qualifications	868	15.5	15.0	14.5
Level 2 Qualifications	964	17.2	18.7	17.2
Level 1 Qualifications	818	14.6	16.7	15.2

2011 Ward profile for E36004094 : Burbage Sketchley and Stretton

Apprenticeships And Other Qualifications	438	7.8	7.8	8.6
No Qualifications	599	10.7	14.9	15.0

Source: 2011 Census (Table LC5106EW - Highest level of qualification by economic activity)

Note: All figures are for persons aged 16 to 64.

Out-Of-Work Benefits

Under Universal Credit a broader span of claimants are required to look for work than under Jobseeker's Allowance. As Universal Credit Full Service is rolled out in particular areas, the number of people recorded as being on the Claimant Count is therefore likely to rise.

Claimant count by sex - not seasonal adjusted (August 2017)

	E36004094 : Burbage Sketchley And Stretton (Numbers)	E36004094 : Burbage Sketchley And Stretton (%)	Hinckley And Bosworth (%)	Great Britain (%)
All People	30	0.6	1.2	1.9
Males	15	0.6	1.4	2.3
Females	15	0.5	1.0	1.5

Source: ONS Claimant count by sex and age

Note: The percentage figures show the number of claimants as a proportion of resident population aged 16-64.

Claimant count by age - not seasonal adjusted (August 2017)

	E36004094 : Burbage Sketchley And Stretton (Numbers)	E36004094 : Burbage Sketchley And Stretton (%)	Hinckley And Bosworth (%)	Great Britain (%)
Aged 16+	30	0.6	1.2	1.9
Aged 16 To 17	0	-	-	-
Aged 18 To 24	10	-	-	-
Aged 18 To 21	5	-	-	-
Aged 25 To 49	10	-	-	-
Aged 50+	10	-	-	-

Source: ONS Claimant count by sex and age

Note: % is number of claimants as a proportion of resident population of the same age

DWP benefit claimants

The DWP benefit claimants table is not yet available. This will be added once DWP supply the data on the new 2011 frozen ward basis.

Definitions and Explanations

Most of the figures in this report are derived from the 2011 Census which was held on 27 March 2011. Further 2011 Census statistics are available from the Nomis wizard/advanced query for areas in England and Wales and the [SCROL](#) site for areas in Scotland.

Census figures are used as these provide the only comprehensive source of labour market information at ward

2011 Ward profile for E36004094 : Burbage Sketchley and Stretton

level. ONS' preferred source for this information at higher levels (local authority, parliamentary constituency, regions) is the Annual population survey. Although the ward profile includes comparative figures for local authorities and regions, ONS advises that at these geographic levels the APS figures available in the local authority profile should be used in preference to the Census figures in the ward profile. Further information on comparing Census and LFS data is given below.

Resident Population

The estimated population of an area includes all those usually resident in the area, whatever their nationality. HM Forces stationed outside the United Kingdom are excluded but foreign forces stationed here are included. Students are taken to be resident at their term-time address.

Labour Supply

Economic activity: They relate to whether or not a person was working or looking for work in the week before Census. The concept of Economic Activity is compatible with the International Labour Organisation (ILO) definition of economic status.

Economically active: All people who were working in the week before the Census are described as economically active. In addition, the category includes people who were not working but were looking for work and were available to start work within 2 weeks. Full-time students who are economically active are included.

Economic activity rate (working age): The number of people, who are economically active aged 16 to 64, expressed as a percentage of all people aged 16 to 64.

Economically inactive: Within the Economic Activity classification, a person is either Economically Active or Inactive. Specific categories of Economic Inactivity are: Retired, Student (excludes those students who were working or in some other way were economically active), Looking after family/ home, Permanently sick/ disabled and Other. A person who is looking for work but is not available to start work within 2 weeks is counted as Economically Inactive.

Main job: The main job is the job in which a person usually works the most hours. Questions on employment relate to each person's main job.

In employment: Any person who did paid work in the week before the Census, whether as an employee or self-employed, is described as employed or in employment. 'Paid work' includes casual or temporary work, even if only for one hour; being on a government-sponsored training scheme; being away from a job/business ill, on maternity leave, on holiday or temporarily laid off; or doing paid or unpaid work for their own or family business.

Employment rate: The number of people in employment expressed as a percentage of the resident population.

Employee: The distinction between employee and self-employed is determined by the response to the question 'Do (did) you work as an employee or are (were) you self-employed?' It relates to the person's main job in the week before the Census or, if not working in the week before the Census, their last main job.

Self-employed: The distinction between employee and self employed is determined by the response to the question 'Do (did) you work as an employee or are (were) you self-employed?' It relates to the person's main job in the week before Census or, if not working in the week before Census, their last main job.

Hours worked: The question on how many hours a week a person usually works in their main job is used to derive whether a person is working full-time (31 hours or more a week) or part-time (30 hours or less per week).

Full-time working: Working full-time is defined as working 31 hours or more a week.

Part-time working: Working part-time is defined as working 30 hours or less a week.

Unemployed: A person is defined as unemployed if he or she is not in employment, is available to start work in the next 2 weeks and has either looked for work in the last 4 weeks or is waiting to start a new job. This is consistent with the International Labour Office (ILO) standard classification.

Occupation: A person's occupation is coded from the response to the question asking for the full title of the Main job and the description of what is done in that job. It is coded to the 2010 edition of the Standard Occupational Classification (SOC).

Qualifications

Level 4 qualifications and above: Degree (for example BA, BSc), Higher Degree (for example MA, PhD, PGCE), NVQ Level 4-5, HNC, HND, RSA Higher Diploma, BTEC Higher level, Foundation degree (NI), Professional qualifications (for example teaching, nursing, accountancy)

Level 3 qualifications: 2+ A Levels/VCEs, 4+ AS Levels, Higher School Certificate, Progression/Advanced

2011 Ward profile for E36004094 : Burbage Sketchley and Stretton

Diploma, Welsh Baccalaureate Advanced Diploma, NVQ Level 3; Advanced GNVQ, City and Guilds Advanced Craft, ONC, OND, BTEC National, RSA Advanced Diploma

Level 2 qualifications: 5+ O Level (Passes)/CSEs (Grade 1)/GCSEs (Grades A*-C), School Certificate, 1 A Level/ 2-3 AS Levels/VCEs, Intermediate/Higher Diploma, Welsh Baccalaureate Intermediate Diploma, NVQ level 2, Intermediate GNVQ, City and Guilds Craft, BTEC First/General Diploma, RSA Diploma

Level 1 qualifications: 1-4 O Levels/CSE/GCSEs (any grades), Entry Level, Foundation Diploma, NVQ Level 1, Foundation GNVQ, Basic/Essential Skills

Apprenticeships and other qualifications: Apprenticeship, Vocational/Work-related Qualifications, Foreign Qualifications (not stated/level unknown)

No qualifications: No formal qualifications held

Out-of-work Benefits

Jobseeker's Allowance

This is the number of people claiming Jobseeker's Allowance (JSA) and National Insurance credits at Jobcentre Plus local offices. People claiming JSA must declare that they are out of work, capable of, available for and actively seeking work during the week in which the claim is made.

The percentage figures express the number of claimants resident in an area as a percentage of the population aged 16-64 resident in that area.

The total JSA claimants is mostly derived from the Jobcentre Plus computer records. For various reasons, e.g. a claimant's National Insurance number is not known, a few claims have to be dealt with manually. These clerical claims, which amount to less than 1 per cent of the total, are counted separately and not analysed in as much detail as the computerised claims. The count of total JSA claimants includes clerical claims, but only the computerised claims are analysed by age and duration.

Introduction of Universal Credit

Tables for Jobseeker's Allowance do not include claimants of Universal Credit who are claiming benefits principally for the reason of being unemployed.

A [list of Jobcentres where Universal Credit is available](#) can be found on the GOV.UK website.

New tables including claimants of Universal Credit will be introduced as soon as possible.

Copyright

Under the terms of the [Open Government Licence](#) (OGL) and [UK Government Licensing Framework](#) (launched 30 September 2010), anyone wishing to use or re-use ONS material, whether commercially or privately, may do so freely without a specific application for a licence, subject to the conditions of the OGL and the Framework.

These new arrangements replace the previous Click-Use and Value Added Licences. For further information, go to the links above, phone 020 8876 3444 or email psi@nationalarchives.gov.uk

Users should include a source accreditation to ONS:

Source: Office for National Statistics

Copyright of a third party

The permission to reproduce Crown protected material does not extend to any material on this site which is identified as being authored by a third party. Authorisation to reproduce such material must be obtained from the copyright holders concerned.

Burbage St Catherines and Lash Hill Demographics (Hinckley and Bosworth, England)

8+1 11

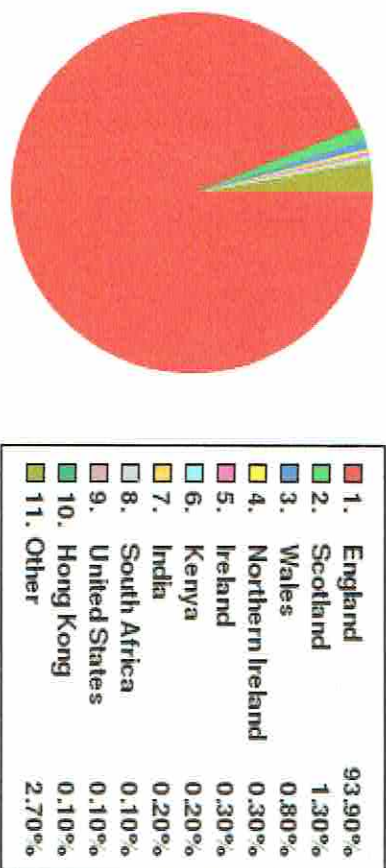
Location: Country:

Burbage St Catherines and Lash Hill is a ward in Hinckley and Bosworth of East Midlands, England and includes areas of Burbage and Sketchley.

In the 2011 census the population of Burbage St Catherines and Lash Hill was 5,706 and is made up of approximately 52% females and 48% males.

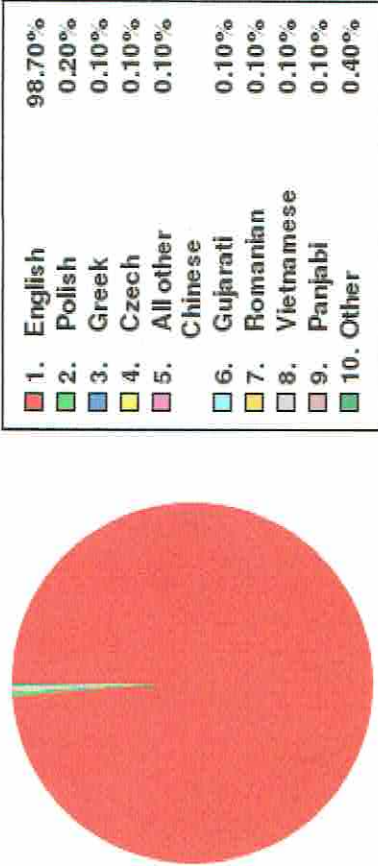
The average age of people in Burbage St Catherines and Lash Hill is 46, while the median age is higher at 47.

93.9% of people living in Burbage St Catherines and Lash Hill were born in England. Other top answers for country of birth were 1.3% Scotland, 0.8% Wales, 0.3% Northern Ireland, 0.3% Ireland, 0.2% Kenya, 0.2% India, 0.1% South Africa, 0.1% United States, 0.1% Hong Kong.

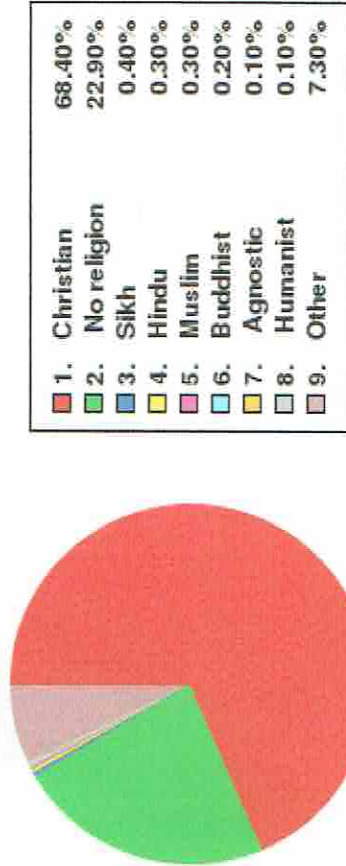


98.7% of people living in Burbage St Catherines and Lash Hill speak English. The other top languages spoken are 0.2% Polish, 0.1% Greek, 0.1% Czech, 0.1% All other Chinese, 0.1% Gujarati, 0.1% Romanian, 0.1% Vietnamese, 0.1% Panjabi.

HOVER TO EXPAND



The religious make up of Burbage St Catherine's and Lash Hill is 68.4% Christian, 22.9% No religion, 0.4% Sikh, 0.3% Hindu, 0.3% Muslim, 0.2% Buddhist, 0.1% Agnostic, 0.1% Humanist.



379 people did not state a religion. 20 people identified as a Jedi Knight. 51.2% of people are married, 10.4% cohabit with a member of the opposite sex, 0.5% live with a partner of the same sex, 17.9% are single and have never married or been in a registered same sex partnership, 8.9% are separated or divorced. There are 323 widowed people living in Burbage St Catherine's and Lash Hill. The top occupations listed by people in Burbage St Catherine's and Lash Hill are Professional 13.9%, Elementary 13.2%, Managers, directors and senior officials 13.2%, Associate professional and technical 12.3%, Administrative and secretarial 11.9%, Skilled trades 11.6%, Elementary administration and service 11.6%, Corporate managers and directors 9.3%, Administrative 9.1%, Process, plant and machine operatives 9.0%.

[>Topics](#) > [Census](#) > [2011 Census: Key Statistics](#) > [Tenure, 2011 \(KS402EW\)](#)
Area: Burbage St Catherines and Lash Hill (Ward)
Tenure, 2011 (KS402EW)
[Map this data \(opens a new window\)](#)
[Email me about data releases](#)

Period

Mar11 ▾

[Print this table](#)

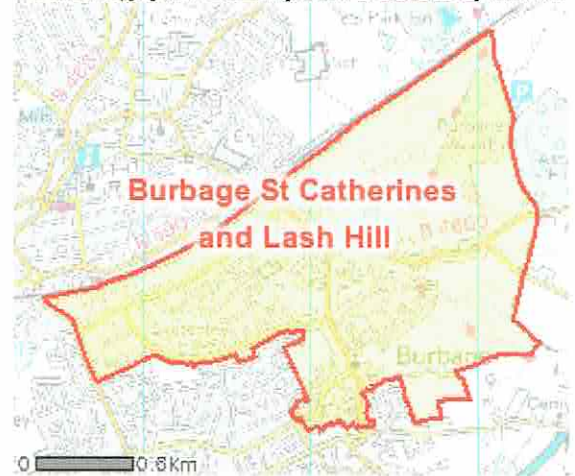
 Download
the
complete
dataset
in
.CSV
format
under
1MB
[Download t](#)

Variable	Measure	Burbage St Catherines and Lash Hill	Hinckley and Bosworth (Non-Metropolitan District)	East Midlands	England
All Households (Households) ¹ ₂	Count	2,619	45,377	1,895,604	23,842,190
Owned; Owned Outright (Households) ¹ ₂	Count	1,018	16,859	621,224	10,200,000
Owned; Owned Outright (Households) ¹ ₂	%	38.9	37.2	32.8	32.8
Owned; Owned with a Mortgage or Loan (Households) ¹ ₂	Count	794	17,967	653,441	10,200,000
Owned; Owned with a Mortgage or Loan (Households) ¹ ₂	%	30.3	39.6	34.5	34.5
Shared Ownership (Part Owned and Part Rented) (Households) ¹ ₂	Count	5	267	12,744	10,200,000
Shared Ownership (Part Owned and Part Rented) (Households) ¹ ₂	%	0.2	0.6	0.7	0.7

Social Rented;

Area Map

© Crown copyright and database rights 2014 Ordnance Survey 100019153



Area: Burbage St Catherines and Lash Hill (Ward)

View

Choose another table from the list

Advanced options

Compare your data further

Rented from Council (Local Authority) (Households) ¹ ₂	Count	510	3,238	192,049	:
Social Rented; Rented from Council (Local Authority) (Households) ¹ ₂	%	19.5	7.1	10.1	
Social Rented; Other (Households) ¹ ₂	Count	81	1,447	108,374	:
Social Rented; Other (Households) ¹ ₂	%	3.1	3.2	5.7	
Private Rented; Private Landlord or Letting Agency (Households) ¹ ₂	Count	153	4,657	257,017	:
Private Rented; Private Landlord or Letting Agency (Households) ¹ ₂	%	5.8	10.3	13.6	
Private Rented; Other (Households) ¹ ₂	Count	19	499	25,426	
Private Rented; Other (Households) ¹ ₂	%	0.7	1.1	1.3	
Living Rent Free (Households) ¹ ₂	Count	39	443	25,329	
Living Rent Free (Households) ¹ ₂	%	1.5	1.0	1.3	

Last Updated: 30 Jan
Source: Office for National Statistics

1 National Statistics

2 The Census asked respondents to identify who their landlord is and the results reflect the responses they gave. In the past decade half of the local authorities in Wales have transferred the management of all their local authority housing stock to other social landlords. Individuals responding to the Census will report their understanding of their landlord and this may not reflect the actual management arrangements in all cases.



[>Topics](#) > [>Census](#) > [>2011 Census: Key Statistics](#) > [>Dwellings, Household Spaces and Accommodation Type, 2011 \(KS401EW\)](#)
Area: Burbage St Catherines and Lash Hill (Ward)
Dwellings, Household Spaces and Accommodation Type, 2011 (KS401EW)
[Map this data \(opens a new window\)](#)
[Email me about data releases](#)

Period

Mar11 ▾

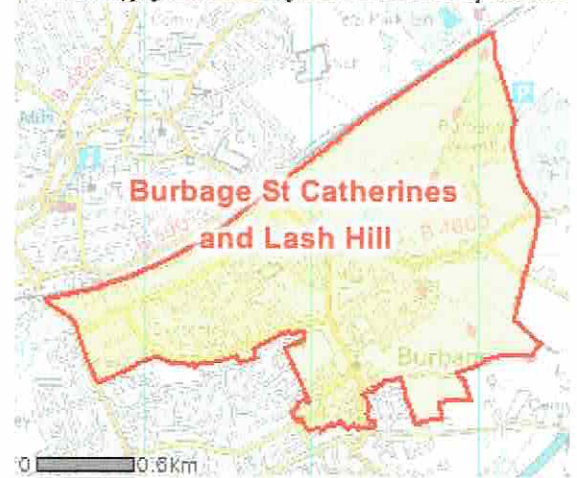
[Print this table](#)

 Download
the
complete
dataset
.CSV
format
under
1MB
[Download t](#)

Variable	Measure	Burbage St Catherines and Lash Hill	Hinckley and Bosworth (Non-Metropolitan District)	East Midlands	Eng
All Dwellings (Dwellings) ¹	Count	2,719	46,909	1,971,514	22,5
Unshared Dwelling (Dwellings) ¹	Count	2,718	46,905	1,970,747	22,5
Unshared Dwelling (Dwellings) ¹	%	100.0	100.0	100.0	
Shared Dwelling; Two Household Spaces (Dwellings) ¹	Count	1	1	255	
Shared Dwelling; Two Household Spaces (Dwellings) ¹	%	0.0	0.0	0.0	
Shared Dwelling; Three or More Household Spaces (Dwellings) ¹	Count	0	3	512	
Shared Dwelling; Three or More Household Spaces (Dwellings) ¹	%	0.0	0.0	0.0	

Area Map

© Crown copyright and database rights 2014 Ordnance Survey 100019153



Area: Burbage St Catherines and Lash Hill (Ward)

View

Choose another table from the list

Advanced options

Compare your data further

All Household Spaces (Household Spaces) ¹	Count	2,720	46,926	1,973,828	23,0
Household Spaces With At Least One Usual Resident (Household Spaces) ¹	Count	2,619	45,377	1,895,604	22,0
Household Spaces With At Least One Usual Resident (Household Spaces) ¹	%	96.3	96.7	96.0	
Household Spaces With No Usual Residents (Household Spaces) ¹	Count	101	1,549	78,224	5
Household Spaces With No Usual Residents (Household Spaces) ¹	%	3.7	3.3	4.0	
Whole House or Bungalow; Detached (Household Spaces) ¹	Count	920	17,382	634,599	5,1
Whole House or Bungalow; Detached (Household Spaces) ¹	%	33.8	37.0	32.2	
Whole House or Bungalow; Semi-Detached (Household Spaces) ¹	Count	1,107	17,874	692,791	7,0
Whole House or Bungalow; Semi-Detached (Household Spaces) ¹	%	40.7	38.1	35.1	
Whole House or Bungalow; Terraced (Including End-Terrace) (Household Spaces) ¹	Count	318	7,511	406,998	5,0
Whole House or Bungalow; Terraced (Including	%	11.7	16.0	20.6	

End-Terrace (Household Spaces) ¹					
Flat, Maisonette or Apartment; Purpose-Built Block of Flats or Tenement (Household Spaces) ¹	Count	332	3,270	183,026	3,8
Flat, Maisonette or Apartment; Purpose-Built Block of Flats or Tenement (Household Spaces) ¹	%	12.2	7.0	9.3	
Flat, Maisonette or Apartment; Part of a Converted or Shared House (Including Bed-Sits) (Household Spaces) ¹	Count	29	332	31,627	9
Flat, Maisonette or Apartment; Part of a Converted or Shared House (Including Bed-Sits) (Household Spaces) ¹	%	1.1	0.7	1.6	
Flat, Maisonette or Apartment; In Commercial Building (Household Spaces) ¹	Count	14	390	17,113	2
Flat, Maisonette or Apartment; In Commercial Building (Household Spaces) ¹	%	0.5	0.8	0.9	
Caravan or Other Mobile or Temporary Structure (Household Spaces) ¹	Count	0	167	7,674	1
Caravan or Other Mobile or					

Temporary Structure (Household Spaces) ¹	%	0.0	0.4	0.4
---	---	-----	-----	-----

Last Updated: 30 Janua
 Source: Office for National S

1 National Statistics



[About Neighbourhood Statistics](#) | [News](#) | [User Guide](#) | [FAQ](#) | [Glossary](#) | [Site Map](#)
 © Crown Copyright | [Contact Us](#) | [Terms and Conditions](#) | GOV.UK

[>Topics](#) > [>Census](#) > [>2011 Census: Key Statistics](#) > [>Car or Van Availability, 2011 \(KS404EW\)](#)
Area: Burbage St Catherines and Lash Hill (Ward)
Car or Van Availability, 2011 (KS404EW)
[Map this data \(opens a new window\)](#)
[Email me about data releases](#)

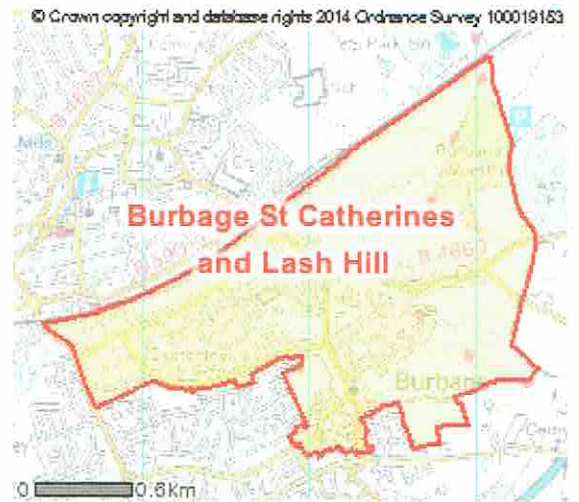
Period

Mar11 ▾

[Print this table](#)

 Download
the
complete
dataset
in
.CSV
format
under
1MB
[Download t](#)

Variable	Measure	Burbage St Catherines and Lash Hill	Hinckley and Bosworth (Non-Metropolitan District)	East Midlands	E
All Households (Households) ¹	Count	2,619	45,377	1,895,604	2
No Cars or Vans in Household (Households) ¹	Count	561	6,618	418,999	!
No Cars or Vans in Household (Households) ¹	%	21.4	14.6	22.1	
1 Car or Van in Household (Households) ¹	Count	1,089	18,943	805,212	!
1 Car or Van in Household (Households) ¹	%	41.6	41.7	42.5	
2 Cars or Vans in Household (Households) ¹	Count	754	15,137	519,487	!
2 Cars or Vans in Household (Households) ¹	%	28.8	33.4	27.4	
3 Cars or Vans in Household (Households) ¹	Count	164	3,458	113,338	!
3 Cars or Vans in Household (Households) ¹	%	6.3	7.6	6.0	

Area Map


Area: Burbage St Catherines and Lash Hill (Ward)

View
[Choose another table from the list](#)
Advanced options
[Compare your data further](#)

4 or More Cars or Vans in Household (Households) ¹	Count	51	1,221	38,568
4 or More Cars or Vans in Household (Households) ¹	%	1.9	2.7	2.0
All Cars or Vans in the Area (Vehicles) ¹	Count	3,310	65,022	2,356,539 2!

Last Updated: 30 Jan
Source: Office for National Statistics

1 National Statistics



[About Neighbourhood Statistics](#) | [News](#) | [User Guide](#) | [FAQ](#) | [Glossary](#) | [Site Map](#)

© Crown Copyright | [Contact Us](#) | [Terms and Conditions](#) | [GOV.UK](#)

2011 - 3152
 2011 - 3310
 + 158 more cars/vans