

A large, stylized orange letter 'A' graphic that serves as a background element. It is composed of thick, rounded strokes and is positioned on the left side of the page, partially overlapping the title text.

The Alexander Centre

The Alexander Collection 2018

The Alexander Collection

The Alexander Centre

The Alexander Centre is a Community Interest Company (CIC) and was established in 2010 with the aim of maintaining and developing Gatefield House in Faversham (now renamed The Alexander Centre) as a cultural and community centre for all the people of Faversham, and the surrounding area. This large Grade II Listed building (circa 1860) was originally built as a family home but from 1943 was used as the Faversham Town Hall and Council Offices. By 2010 the building had become too costly for the Borough Council to maintain and The Alexander Centre CIC took it over that year to operate the building for the local community on a commercial but not-for-profit basis; leasing office space and leasing/hiring out rooms and the main hall, as a venue for a wide range of business and community events.

Art in The Alexander Centre

Since 2010 The Alexander Centre CIC has made significant progress increasing income and carefully investing in and restoring this historic and prestigious building in the heart of Faversham. It was apparent when the public rooms were restored that the walls could also become an asset to the community if we could use them to display and showcase modern art; so the idea of The Alexander Collection was conceived. From the start The Alexander Collection was devised as a win-win opportunity for all concerned; for professional artists, by offering them a year-long showcase for their work at no cost to themselves; for a local community based art gallery, providing additional display and gallery space and for The Alexander Centre, benefiting from works of art on our walls that we could otherwise not afford, to enhance our visitor experience. 2018 will be the fourth season of the Collection. Each year to date we have displayed work of at least 4 professional artists in the ground floor public rooms.

The Alexander Collection - Our Vision

Now that The Alexander Collection has been established our vision is:

- To showcase the work of artists in surroundings that enhance both their work and the building, such that it becomes **the** event that artists aspire to participate in.
- Reserve a section of the exhibition each year for emerging and inspiring new local young artists.

During 2017 we were delighted to announce that we had invited Pim Baxter, currently Deputy Director at the National Portrait Gallery, and who lives locally, to be our first Patron of The Collection. Our task for The 2018 Collection is to take advantage of Pim's experience to provide strategic guidance in developing the concept of The Alexander Collection even further.





Pim Baxter OBE

Image: Sophie Gost

Local Kent resident, Pim Baxter, has become Patron of the Alexander Collection.

Pim, who with her husband Andrew, and family, has lived near Faversham for many years and worked across the Arts including opera, theatre and visual.

Pim's career in the Arts began with the touring opera company, Kent Opera, based near Egerton. This was followed by two years looking after press and marketing at the Orchard Theatre, Dartford, before spending eight years at the National Theatre in London. Pim currently works at the National Portrait Gallery, which she joined in 1997, heading up communications and fundraising. In 2008 she also became the Gallery's Deputy Director.

Pim was awarded an OBE in the 2015 New Year's Honours for services to the Arts.

She has served on a number of boards over the past few years and since March 2014 has been a Lay Canon at St Paul's Cathedral. Closer to home Pim is on the Board of MidKent College and chairs Faversham Counselling Services.

In 2016 she was invited to become a Kent Ambassador, a programme run by Kent County Council to promote the County as widely as possible, through the enthusiasm of those who have a close association with and commitment to the County.

Pim says:

“I am delighted to have been asked to take on this role as Patron of The Alexander Collection, having watched with admiration how the Centre has continued to develop over the past few years as a key focal point within the community, offering a whole range of opportunities and events within Faversham. Giving local artists the opportunity to be shown at the Centre, as well as creating an artistic ambience for those using the building, is beneficial all round. The fact that The Alexander Collection is also a collaboration with Creek Creative, another great artistic asset for the town, is particularly pleasing.

The Alexander Centre

The Alexander Centre is an impressive venue with beautiful heritage rooms and a large hall available to hire for concerts, parties, weddings, conferences, business meetings, classes, training, conferences, markets and fairs.

There are also serviced offices to let on the 1st floor.

Find out more about our up-to-date facilities and outstanding value for money. Check out our website, pop in or call us on 01795 594460.

The Alexander Centre is owned and managed by The Alexander Centre Community Interest Company, a not for profit organisation, and all proceeds are reinvested in restoring and maintaining this valuable asset in the heart of Faversham.



The Alexander Centre

The Alexander Centre CIC
15-17 Preston Street, Faversham, Kent, ME13 8NZ
t 01795 594460

www.thealexandercentre.com

Gallery • Cafe • Shop

Open Tuesday to Sunday from 10am to 4pm

Chef-made delicious light lunches & cakes, fine tea freshly ground coffee + Gluten/Dairy-free options!

We are a not-for-profit independent company supporting professional visual artists, silversmiths & designer-makers, writers & filmmakers, web & media designers, illustrators, musicians & theatre performers.

We offer affordable...

- Rented Studios/Desks
- Project Space Hire
- Performance Facilities
- Training Workshops
- Professional Guidance
- Exhibition Galleries
- Gallery Kitchen Café
- Local Artisan Shop



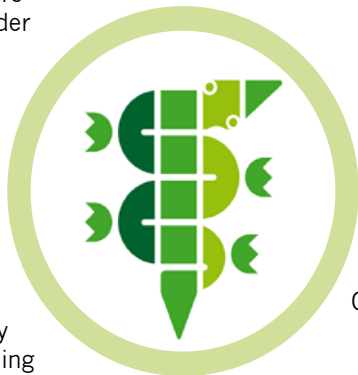
creek creative

community interest company

art & design studios

Creek Creative Studios, No.1 Abbey Street,
Faversham, Kent. ME13 7BE (01795) 535515
info@creek-creative.org www.creek-creative.org
facebook.com/Studio.Provider @creek_creative

Proud sponsors
of the Alexander
Collection
2018



Sign writing
Joinery
Restoration
Stonemasonry
Bespoke framing
Painting/decorating

Illustration
Adobe CS
Graphic design
Mac tuition
Copywriting
Website building

STRIPEY LIZARD CREATIVE SERVICES LTD



☎: 07749 444 008

🌐: www.stripeylizard.com

✉: info@stripeylizard.co.uk

The Alexander Collection

2018

Sponsored by:

The Alexander Centre CIC
Creek Creative CIC
Stripey Lizard Creative Services Ltd
Anthony Hook - KCC

Andrew James



andrewjamesartist.co.uk

Andrew was born in 1969 and brought up in East Sussex. Now living in Kent, Andrew is an entirely self-taught artist and has been painting for nearly 30 years.

Much of this time has been based around the discipline of portraiture and a pursuit of the character, spirit and essence of his subjects in oil paint.

Elected a member of both the Royal Society of Portrait Painters and New English Art Club, Andrew has enjoyed much success, winning prizes at national level as well as gaining notable private and public commissions. He has had exposure on BBC TV, produced DVDs upon the subject of portraiture and written a book on the theme of self-portraiture.

As a tutor for over ten years Andrew has worked both in the UK and abroad privately, as well as in London Colleges, including the Royal Academy.



Title / Description / Dimensions

£

Derly (detail)

NFS

2017, oil on canvas, 100 cm x 81 cm

Dark haired woman with striped shirt



The Apostle (detail)

12000

2016, Oil on canvas, 107 cm x 81 cm

Man in a hat with mountains



Scarlett (detail)

5000

2014, Oil on canvas, 71cm x 51 cm

Blonde girl with striped teeshirt



Luyiso (detail)

12000

2013, Oil on canvas, 100 cm x 81 cm

Man with dreadlocks and green top



Rosa (detail)

NFS

2008, Oil on Canvas, 89 cm x 68 cm

Grey haired lady with blue background

Title / Description / Dimensions

£



Self Portrait (detail)

2013, Oil on Canvas, 51 cm x 46 cm

Winter morning

NFS



Globalist (detail)

2016, Oil on Canvas, 76cm x 56 cm

Man with port wine birthmark

4000



Shoes (detail)

2012, Oil on MDF, 40 cm x 50 cm

Worn shoes with laces in a heap

2000



Small Blue Ball in Tin Foil (detail)

2015, Oil on MDF, 51 cm x 38 cm

Still life on wooden stool

2500

You may purchase artwork direct from the Artist or from
Anne McLaren at Creek Creative (01795 535515)



Brian Oxley

brianoxley2@aol.com

Brian Oxley was born in Croydon, Surrey in 1943 and lives in Hythe on the south coast of Kent. He studied art at Folkestone School of Art and Canterbury College of Art, before attaining his Art Teacher's Certificate at Goldsmiths' College and going on to gain his Masters degree in 'Art in Architecture' at the Kent Institute of Art and Design. An Alumnus Head of Art at Morehall, Pent Valley and Brockhill Park Schools in Kent, Oxley also taught Adult Education for forty-five years.

He has had an extensive catalogue of works exhibited and privately owned both in the UK and overseas, including Canada, the USA, Australia and Europe, including commissions for the cruise liner 'Saga Rose' (1995) and six portraits for the Imos Foundation (2011). He has been included in various publications including the 35th edition of 'Who's Who in Art' (Ed: L. Murray, 2012), a demonstrator for 'The Artist' Magazine for thirty years and involved in the South East Open Studios project.



Title / Description / Dimensions

£

Jenny in the Bay Window

500

Oil on board, 74 cm x 61 cm



Jenny in the Doorway

300

2016, Oil on board, 65cm x 50 cm



Early Dog Walking, Dedham

200

Oil on board, 40 cm x 50 cm

“My wife, Jenny and I have lived at Wayfield House for nearly 40 years and the development of the garden over that period has been a ‘labour of love’ for us both. During this time, I have recorded Jenny and other family members in paintings of the garden and our sheep field.

It is not only that one, as an artist, includes people for personal reasons, but to add a focal point, movement and a sense of scale within the work. These paintings and similar works in private collections, also record Jenny’s planting of trees and shrubs in a garden that was once a neglected old farm. The still life painting of fruit results from plants introduced by us and show medlars, quinces, figs, apples and pears.”

Title / Description / Dimensions

£



Gardening

350

Oil on plywood, 46 cm x 59 cm



Dymchurch Beach with

300

Children Playing

Oil on board, 36cm x 46 cm



Looking Down to the Studio

300

Oil on board, 38 cm x 64 cm



Fruits of the Garden

450

Oil on canvas, 38 cm x 48 cm

(Second in a series of three)



View of Romney Marsh

350

Oil on canvas, 40 cm x 58 cm

You may purchase artwork direct from the Artist or from
Anne McLaren at Creek Creative (01795 535515)



Joel Ely

joeely.com

Joel Ely was born in 1980 in Kent and lives and works in London. His oil paintings are characterised by their combination of figurative realism, borrowed imagery/collage and disruptive bold coloured abstraction. This 'hybrid practice', as he calls it, draws influences from painters such as John Everett Millais, Gwen John and Edwin Dickinson, as well as performance artists such as Adrian Piper, Rebecca Horn and Leigh Bowery.

Although best known for his portraits through exhibiting at the National Portrait Gallery's annual *BP Portrait Award* (in which he received the *Travel Award* in 2005), Joel Ely's practice has also incorporated installation, sculpture and performance. Animals and costume are sometimes featured as motifs within his work to both explore the inherent difficulties of communication and to question the notions of authenticity and tradition.



Title / Description / Dimensions

£

Vaishali with Flamingo
(interventions by Vaishali Pathak)
2009, Oil on canvas, 90 cm x 65 cm

7500

A Portrait of the Artist Vaishali Pathak and a Taxidermied Chilean Flamingo. This painting was made in stages with Vaishali painting sections in response on top. In this way the portrait acts as a conversation between the two artists; like a painterly game of exquisite corpse / consequences.



Cedric's Refusal (detail)
2018, Oil on canvas, 50 cm x 50 cm

3000

The baby pigeon "Cedric" featured in this painting was the eventual positive result of years of disastrous attempts by his mother to lay her eggs in a small and not very sturdy ornamental bay leaf tree. He is pictured on the balcony waiting for his sibling to follow him out of the nest.

You may purchase artwork direct from the Artist or from
Anne McLaren at Creek Creative (01795 535515)



John Wiltshire

johnwiltshire.net

Born 1969 in Pembury, Kent, John Wiltshire studied at Eastbourne and Canterbury, gaining a BA in Fine Art Painting, before going on to become a tutor for Further and Adult Education.

Having shown his work since the age of 9, Wiltshire has been actively involved with many projects, both lone and collaboratively. Work can be found in many exhibitions and residencies throughout Kent, East Sussex, London and Cambridgeshire. He has been involved in regional Open Studios exhibitions, the Collection and Usher Gallery, Lincoln, the RA Summer Show and the Royal Watercolour Society amongst others.

John lives in Faversham and is a teacher at a local school.



Title / Description / Dimensions

£

Peter Firkin and Bagpuss
Local Types (detail), Composition,
Ink and wash
42cm x 59.4 cm

75

Spanning 2015 to 2018, these are part of a series of ink and wash drawings from photographs of buskers, shoppers, residents, teachers, celebrities, butchers and artists, amongst others. I wanted to capture elements of all walks of life.

A2 drawings £75 each, 2 x A2 for £120 (unframed).



Lou Doillon (detail)
Local Types
Composition, Ink and wash
42cm x 59.4 cm

75



Anon 2 (detail)
Local Types
Composition, Ink and wash
42cm x 59.4 cm

75



Anon 4 (detail)
Local Types
Composition, Ink and wash
42cm x 59.4 cm

75

Title / Description / Dimensions

£



Deborah (detail)

75

Local Types

Composition, Ink and wash

42cm x 59.4 cm



Frank Auerbach (detail)

75

Local Types

Composition, Ink and wash

42cm x 59.4 cm



Peaches (detail)

75

Local Types

Composition, Ink and wash

42cm x 59.4 cm



Sue (detail)

75

Local Types

Composition, Ink and wash

42cm x 59.4 cm



Austin Osman (detail)

75

Local Types

Composition, Ink and wash

42cm x 59.4 cm

You may purchase artwork direct from the Artist or from
Anne McLaren at Creek Creative (01795 535515)



Leo Cackett

leocackett.com

Leo Cackett is a London-based photographer. He was born in Canterbury, Kent. Loving photography from a young age, by 11 years old Leo started developing prints in the basement of the family home, with equipment cobbled together by his older brother.

In 1999 Cackett started assisting at Spring Studios in London which lead to full time work with some of the biggest names in photography; Corrine Day, Nick Knight, Warren Du Preez and Nick Thornton Jones to name a few. In 2006 he relocated to New York to assist Matt Jones for two years before moving back to London to begin his career as a freelance photographer.

He has a candid approach to photography and this has seen him build a strong and diverse body of work. He has travelled extensively and finds inspiration documenting the lives of the people and situations he experiences.



Title / Description / Dimensions

£

Landlord (detail)

580*

Portrait of the Shipwrights Arms landlord

C-type print on velvet paper. Mounted on

Dibond, heat-sealed with aluminum sub frame.

81 cm x 122 cm

Print only £270*



The Shipwrights Arms (detail)

220*

Early morning winter landscape

C-type print on velvet paper. Mounted on

Dibond, heat-sealed with aluminum sub frame.

76 cm x 51 cm

Print only £80*



Reeds in the wind and rain (detail)

317*

Views from car while bird watching at Oare

C-type print on velvet paper. Mounted on

Dibond, heat-sealed with aluminum sub frame.

91 cm x 61 cm

Print only £150*



Bird watching (detail)

440*

Birdwatchers in their car in Oare

C-type print in velvet paper. Mounted on

Dibond, heat-sealed with aluminum sub frame.

76 cm x 51 cm (total size 152 cm x 51 cm)

Prints only £160*

*excludes VAT sizes are approximate.

Title / Description / Dimensions

£



Mickey

220*

Resident of the Hollowshore Moorings
C-type print on velvet paper. Mounted on
Dibond, heat-sealed with aluminum sub frame.

76 cm x 51 cm

Print only £80*



Hollowshore (detail)

951*

Early morning winter landscape triptych
C-type print on velvet paper. Mounted on
Dibond, heat-sealed with aluminum sub frame.

61 cm x 91 cm (total size 183 cm x 91 cm)

Prints only £450*

You may purchase artwork direct from the Artist or from
Anne McLaren at Creek Creative (01795 535515)

*excludes VAT, sizes approximate

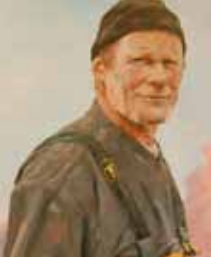
Simon Davis



@simondavispainting

Simon Davis trained in Technical Illustration at Leamington Spa and then Graphic Design at Swindon. After a brief time working in design studios, he began illustrating for the iconic British comic 2000ad and continues to do so after 25 years.

Simon has illustrated for many publications around the world and has also storyboarded music videos for the likes of Muse and Tori Amos amongst others. He has a career as a portrait painter that runs in parallel to this illustration work. In 2008 Davis was runner up in the *BP Portrait Award* and in the same year elected to the Royal Society of Portrait Painters. He is currently their Vice-President.



Title / Description / Dimensions

£

Trawlerman, Newlyn (detail)

1300

Oils on board

99 cm x 59 cm



Mick Mahon (detail)

2500

Oils on board

59 cm x 99 cm



Harbour, Newlyn (detail)

1000

Oils on board

69 cm x 48 cm



Newlyn (detail)

1500

Oils on board

74 cm x 74 cm



Nervous (detail)

800

Oils on board

51 cm x 51 cm

You may purchase artwork direct from the Artist or from
Anne McLaren at Creek Creative (01795 535515)



Simon Shaw

smscreativeservices.co.uk

Simon Shaw was born in Kent in 1968 and lives in Faversham. He studied Graphic Design at Falmouth School of Art, Cornwall. Upon qualifying he moved to London to work for a number of large corporate organisations as a photographer / graphic designer. His role involves taking marketing photographs and working with logo / brand implementation. In 2007 Simon moved to Faversham. He currently works as a corporate and product photographer and graphic designer.

His work has been exhibited in Kent, London, Essex and Europe. Although most photography commissions are for corporate marketing purposes, Simon finds Faversham a rich source of visual inspiration and often takes photographs in and around this part of the North Kent Coast, including digital, pinhole, photogram and painting with light processes.



Title / Description / Dimensions

£

Subject: Alex Law, upholstery tutor / artist 380
Location: Oare Marshes N R (detail)
84 cm x 48 cm (framed quadriptych*)

Oare Marshes Nature Reserve is a place of great tranquillity and beauty, with superb light. Alex often visits here to walk along the shoreline to 'beach clean' (collect plastic pollution); he has used objects collected, to build the chair seen in the photographs.



Subject: Jill Holder, artist 380
Location: Faversham Creek (detail)
84 cm x 48 cm (framed quadriptych*)

Jill was the first subject to be photographed. Faversham Creek is a much-used place for locals and visitors alike. The creek has a haunting, inspirational atmosphere of the marshes that attracts artists and is a direct route out of Faversham along the creek to the estuary.

All locations are in or around Faversham. I have visited these places many times and often think about photographing them with a person in the foreground. I approached a number of local people and instructed them to bring a small number of personal objects / possessions of significance. Each location is different but linked with many common themes. Aside from a single subject with personal belongings, the idea of water features in all of them. I feel this is important as so much of Faversham's past and present has a connection with water. Each composition is detached from other people, technology, commerce and dwellings.

*All photographs printed on giclée Hahnemühle etching paper
Mounted / framed

Print only: Large: 46 cm x 30 cm £120, Small: 14 cm x 9 cm £40



Subject: Max Kimber, artist and taxidermist 380
Location: Oare Gunpowder Works (detail)
84 cm x 48 cm (framed quadriptych*)

The Gun Powder Works are located in Oare, Faversham, I often cycle or walk there and find the place both fascinating and calming. Max Kimber, who also has an interest in Anthrozoology, chose to include some of her taxidermy pieces seen in the photos.



Subject: Kate Garcia, sculptor / artist 380
Location: A disused water tower (detail)
84 cm x 48 cm (framed quadriptych*)

This place has caught my eye many times; a solitary brick structure surrounded by nature. Kate, a local artist, brought with her a camping chair, small table and a selection of personal possessions to mark her interests and place of birth; every object has significance.



Subject: Martin Nicholls, musician 380
Location: Stonebridge Pond (detail)
84 cm x 48 cm (framed quadriptych*)

A calming place set at the foot of Davington Hill, often visited by locals who come to feed the ducks and relax by the water. Martin Nicholls, a local musician and singer, brought his trombone, chair, a music stand and the songbook of Jacques Brel.

You may purchase artwork direct from the Artist or from
Anne McLaren at Creek Creative (01795 535515)

INTRODUCING Our emerging new artists

ROBYN MILNE

Portrait of My Mother
Oil on board, 2017
74 cm x 90 cm
POA



As part of a large collection of experimental portraits, I produced this portrait of my mother. Painted in acrylic on board, a medium I have a lot of experience with and enjoy working in, I chose to work on a large scale to add more impact and detail. In this piece the detail and texture add a strong sense of character, something that was very important to me when working. I wanted to capture the true sense of my mother; her beauty, personality and sense of being.

You may purchase artwork direct from the Artist or from
Anne McLaren at Creek Creative (01795 535515)

INTRODUCING Our emerging new artists

THEO GRACE

Self Portrait
Oil on cardboard, 2017
90 cm x 145 cm
POA



Theo Grace, born in 2000, is a student at Queen Elizabeth's Grammar School. He has been studying Art for four years and is in his final year of A-levels. During this time he has primarily worked on developing his paintings and has exhibited work locally at Creek Creative. He has had three of his pieces selected for the National Student Exhibition at the Mall Galleries in London, one in 2015 and two in 2017. The focus of the work has largely been self-portraiture and he has been exploring different textures in his painting.

You may purchase artwork direct from the Artist or from
Anne McLaren at Creek Creative (01795 535515)

Alumni Artists

2017

Josephine Harvatt

Moira Hyde

Estelle Jourd

Angela Rumble

Sarah Stokes

2016

Wendy Broer

Aaron McArdle

Wendy McNaught

Cherryl Fountain

2015

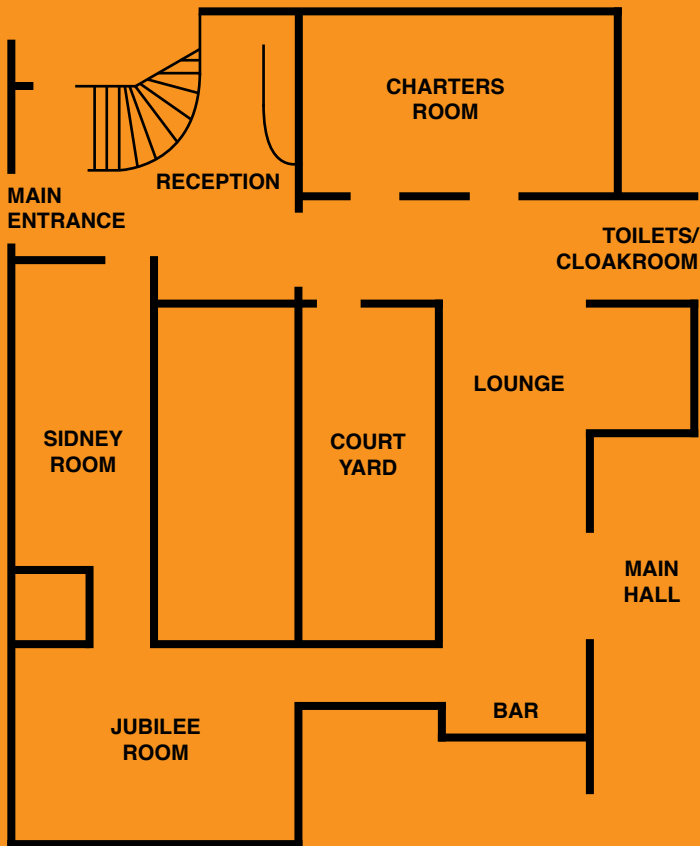
Antony Bream

Barry Fincham

Cherryl Fountain

Paul Fowler

David Hayward



Designed by
Stripecy Lizard Creative Services Ltd

Kindly sponsored by
Anthony Hook for KCC

